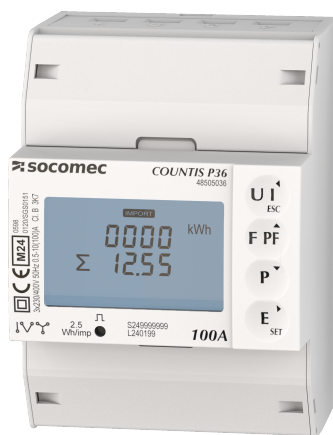


48505036

Three-phase MID energy meter, up to 100A via direct connection, MBUS protocol



Access to resources (ex: manuals)

Technical Characteristics

Application	Metering
Communication ports	M-BUS
Model	P36
Type	3PH 100A, MID

Classification

UNSPSC	41113708
ETIM Class	EC001506

Commerce

Description	COUNTIS P36 are three-phase modular electrical energy meters that enable viewing of the different energies consumed and produced, and also of powers and other measurements directly on the backlit LCD display.
Effective date	2099-01-01
Offer Life Cycle Code	10
Country of origin	CN
Former product list	48C03136 COUNTIS M36 3P 100A MBUS MID

Environmental Sustainability

PEP Filename	SOCO-00112-V01.01-EN.pdf
Climate change - Total - Cradle to Grave [kg CO ₂ eq.]	30
Climate change - Total - Cradle to Gate [kg CO ₂ eq.]	12

ETIM - Electrical characteristics

Nominal current (In) [A]	100
Max. current (Imax) [A]	100
Nominal voltage (Un) N-L [V]	184..276
Nominal voltage (Un) L-L [V]	320..480
Frequency [Hz]	45..55

Power consumption [W]	1
Accuracy class	B
Pole type	Three conductor/four conductor
Energy type	Effective power and blind power
Suitable for	Purchase/supply
Tariff type	Multi-tariff
Tariff control	External
Measurement type load profile	No
Calibrated	Yes
Pulse output	Optical
Pulse type	D0
Pulse rate [Imp/kWh (kvarh)]	10..10
ETIM - Mechanical characteristics	
Escapement mechanism	No
Mounting method	DRA (DIN-rail adapter)
Width in number of modular spacings	4
Width [mm]	72
Depth [mm]	66
Height [mm]	100
With lock code	No
Degree of protection (IP)	IP20
ETIM - Technical features	
Type of meter	Electronic
Model	Direct measurement
Approval	Measuring Instruments Directive
Type of indication	Digital
Type of interface	M-bus (wired)
EEC40 signature	No
Logistics	
GTIN/EAN	3596033319457
Customs number	9028301900