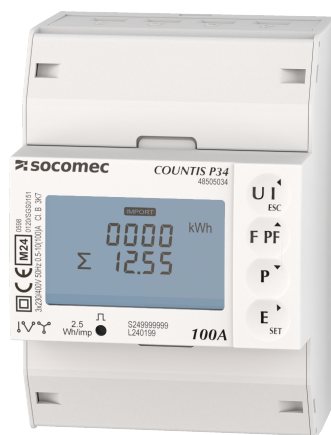


48505034

Energy Meter COUNTIS P34 Three/four conductor 3PH 100A, MID Modbus



Strong points

- Compact design
- MID certification
- Versatile
- Easy integration
- Multi-interfaces

Compliance with standards

- IEC 62053-21
- IEC 62053-23
- IEC 62053-31
- IEC 62052-11
- IEC 61010-1
- EN 50470-1
- EN 50470-3

Access to resources (ex: manuals)

COUNTIS P3x are three-phase modular electrical energy meters that enable viewing of the different energies consumed and produced, and also of powers and other measurements directly on the backlit LCD display. They enable direct connection up to 100 A and are suitable for use in sub-billing applications thanks to their MID certification.

Technical Characteristics

Application	Metering
Communication protocols	MODBUS
Model	P34
Type	3PH 100A, MID

Classification

UNSPSC	41113708
ETIM Class	EC001506

Commerce

Description	Modular active-energy meters COUNTIS P34 MID-certified Three phase - direct 100A, MODBUS type of electrical protocols, fully integrated in SOCOMEC ecosystem including: Webview/screens/gateways/configuration software
Effective date	2025-01-01
Offer Life Cycle Code	40
Country of origin	CN
Former product list	48C03020 COUNTIS M33 3PH 100A MODBUS 48C03134 COUNTIS M34 3P 100A MODBU MID

Environmental Sustainability

PEP Filename	SOCO-00112-V01.01-EN.pdf
Climate change - Total - Cradle to Grave [kg CO ₂ eq.]	30
Climate change - Total - Cradle to Gate [kg CO ₂ eq.]	12

ETIM - Electrical characteristics

Nominal current (In) [A]	100
Max. current (Imax) [A]	100
Nominal voltage (Un) N-L [V]	184..276
Nominal voltage (Un) L-L [V]	320..480
Frequency [Hz]	45..55
Power consumption [W]	1
Accuracy class	B
Pole type	Three conductor/four conductor
Energy type	Effective power and blind power
Suitable for	Purchase/supply
Tariff type	Multi-tariff
Tariff control	External
Measurement type load profile	No
Calibrated	Yes
Pulse output	Optical

Pulse type	D0
Pulse rate [Imp/kWh (kvarh)]	10..10
ETIM - Mechanical characteristics	
Escapement mechanism	No
Mounting method	DRA (DIN-rail adapter)
Width in number of modular spacings	4
Width [mm]	72
Depth [mm]	66
Height [mm]	100
With lock code	No
Degree of protection (IP)	IP20
ETIM - Technical features	
Type of meter	Electronic
Model	Direct measurement
Approval	Measuring Instruments Directive
Type of indication	Digital
Type of interface	Modbus
EEC40 signature	No
Logistics	
GTIN/EAN	3596033319440
Customs number	9028301900