

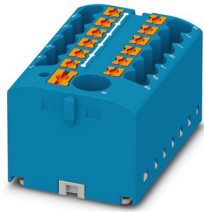
Distribution block - PTFIX 6/12X2,5 BU



3273354

<https://www.phoenixcontact.com/pc/products/3273354>

Please be informed that the data shown in this PDF document is generated from our Online Catalog. Please find the complete data in the user documentation. Our General Terms of Use for Downloads are valid.



Distribution block, the blocks can be bridged with one another via the conductor shaft, for corresponding plug-in bridges, see accessories, Basic terminal block with supply, nom. voltage: 450 V, nominal current: 24 A, connection method: Push-in connection, Load contact, cross section: 0.14 mm² - 4 mm², Push-in connection, Line contact, Rated cross section: 6 mm², cross section: 0.5 mm² - 10 mm², mounting type: for snapping onto a DIN rail adapter, Direct mounting with flange, Free-hanging, color: blue

Your advantages

- Flexible use, thanks to DIN rail mounting, direct mounting or adhesive mounting
- Clear wiring, thanks to eleven different color variants
- Time-saving conductor connection, thanks to tool-free Push-in direct connection technology
- Time savings of up to 80 %, thanks to ready-to-mount blocks without manual bridging
- Space savings of up to 50 % on the DIN rail, thanks to transverse mounting

Commercial Data

Item number	3273354
Packing unit	8 pc
Minimum order quantity	8 pc
Product Key	BEA123
Catalog Page	Page 443 (C-1-2019)
GTIN	4055626392462
Weight per Piece (including packing)	30.01 g
Weight per Piece (excluding packing)	30.01 g
Customs tariff number	85369010
Country of origin	PL

Technical Data

Notes

Notes on operation	the blocks can be bridged with one another via the conductor shaft, for corresponding plug-in bridges, see accessories
--------------------	--

General

Note	The maximum load current of a single clamping unit must not be exceeded. For power distribution applications, IEC 60364-4-43:2008; modified + corrigendum Okt. 2008 (DIN VDE 0100-430:2010-10) section 433.2 ff must be observed!
------	--

Product properties

Product type	Distributor terminal block
Number of connections	13
Number of rows	1
Potentials	1

Insulation characteristics

Overvoltage category	III
Degree of pollution	3

Electrical properties

Rated surge voltage	6 kV
Maximum power dissipation for nominal condition	0.77 W

Connection data

Service Entrance	yes
Number of connections per level	13
Nominal cross section	2.5 mm ²
Rated cross section AWG	14

Load contact

Stripping length	8 mm ... 10 mm
Internal cylindrical gage	A3
Connection in acc. with standard	IEC 60998-2-2
Conductor cross section solid	0.14 mm ² ... 4 mm ²
Cross section AWG	26 ... 12 (converted acc. to IEC)
Conductor cross section flexible	0.14 mm ² ... 2.5 mm ²
Conductor cross section, flexible [AWG]	26 ... 14 (converted acc. to IEC)
Flexible conductor cross section flexible (ferrule, w/o plastic sleeve)	0.14 mm ² ... 2.5 mm ²
Flexible conductor cross section (ferrule with plastic sleeve)	0.14 mm ² ... 2.5 mm ²
Nominal current	24 A
Maximum load current	32 A (with 4 mm ² conductor cross section)

Distribution block - PTFIX 6/12X2,5 BU



3273354

<https://www.phoenixcontact.com/pc/products/3273354>

Maximum total current	57 A (with 10 mm ² conductor cross section)
Nominal voltage	450 V

Line contact

Stripping length	10 mm ... 12 mm
Connection in acc. with standard	IEC 60998-2-2
Conductor cross section solid	0.5 mm ² ... 10 mm ²
Cross section AWG	20 ... 8 (converted acc. to IEC)
Conductor cross section flexible	0.5 mm ² ... 10 mm ²
Conductor cross section, flexible [AWG]	20 ... 10 (converted acc. to IEC)
Flexible conductor cross section flexible (ferrule, w/o plastic sleeve)	0.5 mm ² ... 6 mm ²
Flexible conductor cross section (ferrule with plastic sleeve)	0.5 mm ² ... 6 mm ²
Conductor cross-section flexible (2 conductors with the same cross-section, with TWIN ferrule and plastic sleeve)	0.5 mm ² ... 1.5 mm ²
2 conductors with the same cross section, flexible, with TWIN ferrule with plastic sleeve	0.5 mm ² ... 1.5 mm ²
Nominal current	41 A (with 6 mm ² conductor cross section)
Maximum load current	57 A (with 10 mm ² conductor cross section)
Nominal cross section	6 mm ²

Load contact Connection cross sections directly pluggable

Conductor cross section solid	0.34 mm ² ... 4 mm ²
Conductor cross section, solid [AWG]	24 ... 12 (converted acc. to IEC)
Flexible conductor cross section flexible (ferrule, w/o plastic sleeve)	0.34 mm ² ... 2.5 mm ²
Flexible conductor cross section (ferrule with plastic sleeve)	0.34 mm ² ... 2.5 mm ²

Line contact Connection cross sections directly pluggable

Conductor cross section solid	1 mm ² ... 10 mm ²
Flexible conductor cross section flexible (ferrule, w/o plastic sleeve)	1 mm ² ... 6 mm ²
Flexible conductor cross section (ferrule with plastic sleeve)	1 mm ² ... 6 mm ²

Dimensions

Width	41 mm
Height	21.7 mm
Length	28.6 mm

Material specifications

Color	blue
Flammability rating according to UL 94	V0
Insulating material group	I
Insulating material	PA
Static insulating material application in cold	-60 °C
Temperature index of insulation material (DIN EN 60216-1 (VDE 0304-21))	130 °C

Distribution block - PTFIX 6/12X2,5 BU



3273354

<https://www.phoenixcontact.com/pc/products/3273354>

Relative insulation material temperature index (Elec., UL 746 B)	130 °C
Fire protection for rail vehicles (DIN EN 45545-2) R22	HL 1 - HL 3
Fire protection for rail vehicles (DIN EN 45545-2) R23	HL 1 - HL 3
Fire protection for rail vehicles (DIN EN 45545-2) R24	HL 1 - HL 3
Fire protection for rail vehicles (DIN EN 45545-2) R26	HL 1 - HL 3
Calorimetric heat release NFPA 130 (ASTM E 1354)	28 MJ/kg
Surface flammability NFPA 130 (ASTM E 162)	passed
Specific optical density of smoke NFPA 130 (ASTM E 662)	passed
Smoke gas toxicity NFPA 130 (SMP 800C)	passed

Mechanical properties

Mechanical data

Open side panel	No
-----------------	----

Mechanical tests

Attachment on the carrier

DIN rail/fixing support	NS 35/NS 15
Result	Test passed
Note	<p>When aligning several blocks, it is recommended to either place a DIN rail adapter underneath the connection point or a flange element between the blocks.</p> <p>For versions with 6 or 7 connections, it is enough to place one DIN rail adapter centrally per block and place flange elements after every other block.</p> <p>When using the DIN rail adapter PTFIX-NS35, an aligned block must not protrude by more than a half.</p>

Environmental and real-life conditions

Needle-flame test

Time of exposure	30 s
Result	Test passed

Oscillation/broadband noise

Specification	DIN EN 50155 (VDE 0115-200):2008-03
Spectrum	Service life test category 2, bogie-mounted
Frequency	$f_1 = 5 \text{ Hz}$ to $f_2 = 250 \text{ Hz}$
ASD level	$6.12 \text{ (m/s}^2\text{)}^2\text{/Hz}$
Acceleration	3.12g
Test duration per axis	5 h
Test directions	X-, Y- and Z-axis
Result	Test passed

Shocks

Specification	DIN EN 50155 (VDE 0115-200):2008-03
Pulse shape	Half-sine

Distribution block - PTFIX 6/12X2,5 BU



3273354

<https://www.phoenixcontact.com/pc/products/3273354>

Acceleration	30g
Shock duration	18 ms
Number of shocks per direction	3
Test directions	X-, Y- and Z-axis (pos. and neg.)
Result	Test passed

Ambient conditions

Ambient temperature (operation)	-60 °C ... 105 °C (max. short-term operating temperature RTI Elec.)
Ambient temperature (storage/transport)	-25 °C ... 60 °C (for a short time, not exceeding 24 h, -60 °C to +70 °C)
Ambient temperature (assembly)	-5 °C ... 70 °C
Ambient temperature (actuation)	-5 °C ... 70 °C
Permissible humidity (storage/transport)	30 % ... 70 %

Standards and regulations

Connection in acc. with standard	IEC 60998-2-2
	IEC 60998-2-2

Mounting

Mounting type	for snapping onto a DIN rail adapter
	Direct mounting with flange
	Free-hanging

Distribution block - PTFIX 6/12X2,5 BU

3273354

<https://www.phoenixcontact.com/pc/products/3273354>



Drawings

Circuit diagram



Distribution block - PTFIX 6/12X2,5 BU



3273354

<https://www.phoenixcontact.com/pc/products/3273354>

Approvals

DNV Approval ID: TAE00002TT				
	Nominal Voltage U_N	Nominal Current I_N	Cross Section AWG	Cross Section mm^2
	500 V	24 A	-	-

CSA Approval ID: 13631				
	Nominal Voltage U_N	Nominal Current I_N	Cross Section AWG	Cross Section mm^2
Use group B				
Output	300 V	20 A	26 - 12	-
Input	300 V	50 A	20 - 8	-
Use group C				
Output	300 V	20 A	26 - 12	-
Input	300 V	50 A	20 - 8	-
Use group D				
Input	600 V	5 A	20 - 8	-

IECEE CB Scheme Approval ID: DE1-63086				
	Nominal Voltage U_N	Nominal Current I_N	Cross Section AWG	Cross Section mm^2
	450 V	41 A	-	- 6

EAC Approval ID: RU C-DE.BL08.B.00644				
---	--	--	--	--

cULus Recognized Approval ID: E60425				
	Nominal Voltage U_N	Nominal Current I_N	Cross Section AWG	Cross Section mm^2
Use group B				
Output	300 V	20 A	26 - 12	-
Input	300 V	50 A	20 - 8	-
Use group C				
Output	300 V	20 A	26 - 12	-
Input	300 V	50 A	20 - 8	-
Use group D				
Output	600 V	5 A	26 - 12	-
Input	600 V	5 A	20 - 8	-

Distribution block - PTFIX 6/12X2,5 BU



3273354

<https://www.phoenixcontact.com/pc/products/3273354>



LR

Approval ID: LR2002627TA



BV

Approval ID: 59146/A0 BV



VDE Zeichengenehmigung

Approval ID: 40047798

	Nominal Voltage U_N	Nominal Current I_N	Cross Section AWG	Cross Section mm^2
	450 V	41 A	-	-

Distribution block - PTFIX 6/12X2,5 BU



3273354

<https://www.phoenixcontact.com/pc/products/3273354>

Classifications

ECLASS

ECLASS-9.0	27141120
ECLASS-10.0.1	27141120
ECLASS-11.0	27141120

ETIM

ETIM 8.0	EC000897
----------	----------

UNSPSC

UNSPSC 21.0	39121400
-------------	----------

Distribution block - PTFIX 6/12X2,5 BU



3273354

<https://www.phoenixcontact.com/pc/products/3273354>

Environmental Product Compliance


China RoHS	Environmentally friendly use period: unlimited = EFUP-e
	No hazardous substances above threshold values

Distribution block - PTFIX 6/12X2,5 BU

3273354

<https://www.phoenixcontact.com/pc/products/3273354>

Accessories

 Note: Applying some accessories below might limit this product.


Plug-in bridge

Plug-in bridge - FBS 2-5 - 3030161

<https://www.phoenixcontact.com/pc/products/3030161>



Plug-in bridge, pitch: 5.2 mm, number of positions: 2, length: 23 mm, color: red

 Max. current carrying capacity: 24 A

Plug-in bridge

Plug-in bridge - FBS 2-5 GN - 3032143

<https://www.phoenixcontact.com/pc/products/3032143>



Plug-in bridge, pitch: 5.2 mm, number of positions: 2, color: green

 Max. current carrying capacity: 24 A

Distribution block - PTFIX 6/12X2,5 BU

3273354

<https://www.phoenixcontact.com/pc/products/3273354>

Plug-in bridge

Plug-in bridge - FBS 2-5 BU - 3036877

<https://www.phoenixcontact.com/pc/products/3036877>



Plug-in bridge, pitch: 5.2 mm, number of positions: 2, color: blue

 Max. current carrying capacity: 24 A


Plug-in bridge

Plug-in bridge - FBS 2-5 GY - 3038969

<https://www.phoenixcontact.com/pc/products/3038969>



Plug-in bridge, pitch: 5.2 mm, number of positions: 2, color: gray

 Max. current carrying capacity: 24 A

Distribution block - PTFIX 6/12X2,5 BU

3273354

<https://www.phoenixcontact.com/pc/products/3273354>

DIN rail adapter

DIN rail adapter - PTFIX-NS35 - 3274054

<https://www.phoenixcontact.com/pc/products/3274054>

DIN rail adapter, length: 58.1 mm, width: 28.6 mm, height: 11 mm, color: gray



DIN rail adapter

DIN rail adapter - PTFIX-NS35A - 3274056

<https://www.phoenixcontact.com/pc/products/3274056>

DIN rail adapter, length: 45.7 mm, width: 10.3 mm, height: 11.9 mm, color: gray



Distribution block - PTFIX 6/12X2,5 BU

3273354

<https://www.phoenixcontact.com/pc/products/3273354>

DIN rail adapter

DIN rail adapter - PTFIX-NS35A-FIX - 3274057

<https://www.phoenixcontact.com/pc/products/3274057>

DIN rail adapter, with end stop function, length: 45.7 mm, width: 10.3 mm, height: 12 mm, color: gray

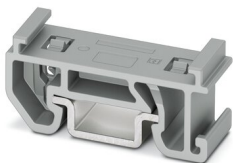


DIN rail adapter

DIN rail adapter - PTFIX-NS15A - 3274058

<https://www.phoenixcontact.com/pc/products/3274058>

DIN rail adapter, length: 28.6 mm, width: 10.3 mm, height: 10.8 mm, color: gray



Distribution block - PTFIX 6/12X2,5 BU

3273354

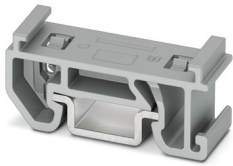
<https://www.phoenixcontact.com/pc/products/3273354>

DIN rail adapter

DIN rail adapter - PTFIX-NS15A-FIX - 3274059

<https://www.phoenixcontact.com/pc/products/3274059>

DIN rail adapter, with end stop function, length: 28.6 mm, width: 10.3 mm, height: 10.8 mm, color: gray



Flange

Flange - PTFIX-F - 3274060

<https://www.phoenixcontact.com/pc/products/3274060>

Flange, with screw-on fixing, length: 28.6 mm, width: 8.6 mm, height: 21.7 mm, color: gray



Distribution block - PTFIX 6/12X2,5 BU



3273354

<https://www.phoenixcontact.com/pc/products/3273354>

Test plugs

Test plugs - MPS-MT SN - 3212251

<https://www.phoenixcontact.com/pc/products/3212251>

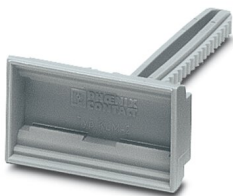


Test plugs, with solder connection up to 1 mm² conductor cross section, tin-plated surface, color: silver

Terminal strip marker carrier

Terminal strip marker carrier - KLM 2 - 0807575

<https://www.phoenixcontact.com/pc/products/0807575>



Terminal strip marker carrier, adjustable height, for CLIPFIX 15, CLIPFIX 35, and CLIPFIX 35-5 end brackets, can be marked using snap-in labels

Distribution block - PTFIX 6/12X2,5 BU

3273354

<https://www.phoenixcontact.com/pc/products/3273354>

Terminal strip marker carrier

Terminal strip marker carrier - KLM 3-L - 0814788

<https://www.phoenixcontact.com/pc/products/0814788>



Terminal strip marker carrier, adjustable height, for CLIPFIX 15, CLIPFIX 35, and CLIPFIX 35-5 end brackets, can be marked using labels in 20 x 8 mm format

Screwdriver

Screwdriver - SZF 1-0,6X3,5 - 1204517

<https://www.phoenixcontact.com/pc/products/1204517>



Actuation tool, for ST terminal blocks, also suitable for use as a bladed screwdriver, size: 0.6 x 3.5 x 100 mm, 2-component grip, with non-slip grip

Distribution block - PTFIX 6/12X2,5 BU

3273354

<https://www.phoenixcontact.com/pc/products/3273354>

Test plugs

Test plugs - MPS-MT 1-S - 1944372

<https://www.phoenixcontact.com/pc/products/1944372>

Test plug, consisting of 1.0 mm Ø test pin and 2.0 mm Ø socket

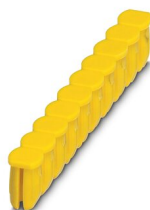


Filler plugs

Filler plugs - CEC 2,5 - 3062757

<https://www.phoenixcontact.com/pc/products/3062757>

Cover for conductor shaft, 10-pos., for spring cage terminal blocks (ST) and terminal blocks with push-in technology (PT) with a width of 5.2 mm



Distribution block - PTFIX 6/12X2,5 BU

3273354

<https://www.phoenixcontact.com/pc/products/3273354>

Test adapter

Test adapter - PAI-4-N GY - 3032871

<https://www.phoenixcontact.com/pc/products/3032871>



4 mm test adapter, for terminal blocks with 5.2 mm, 6.2 mm and 8.2 mm pitch

Test plugs

Test plugs - MPS-MT - 0201744

<https://www.phoenixcontact.com/pc/products/0201744>



Test plugs, with solder connection up to 1 mm² conductor cross section, color: gray

Distribution block - PTFIX 6/12X2,5 BU

3273354

<https://www.phoenixcontact.com/pc/products/3273354>

Insulating sleeve

Insulating sleeve - MPS-IH WH - 0201663

<https://www.phoenixcontact.com/pc/products/0201663>

Insulating sleeve, color: white



Insulating sleeve

Insulating sleeve - MPS-IH RD - 0201676

<https://www.phoenixcontact.com/pc/products/0201676>

Insulating sleeve, color: red



Distribution block - PTFIX 6/12X2,5 BU

3273354

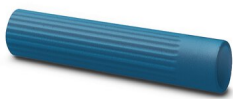
<https://www.phoenixcontact.com/pc/products/3273354>

Insulating sleeve

Insulating sleeve - MPS-IH BU - 0201689

<https://www.phoenixcontact.com/pc/products/0201689>

Insulating sleeve, color: blue



Insulating sleeve

Insulating sleeve - MPS-IH YE - 0201692

<https://www.phoenixcontact.com/pc/products/0201692>

Insulating sleeve, color: yellow



Distribution block - PTFIX 6/12X2,5 BU

3273354

<https://www.phoenixcontact.com/pc/products/3273354>

Insulating sleeve

Insulating sleeve - MPS-IH GN - 0201702

<https://www.phoenixcontact.com/pc/products/0201702>

Insulating sleeve, color: green



Insulating sleeve

Insulating sleeve - MPS-IH GY - 0201728

<https://www.phoenixcontact.com/pc/products/0201728>

Insulating sleeve, color: gray



Distribution block - PTFIX 6/12X2,5 BU

3273354

<https://www.phoenixcontact.com/pc/products/3273354>

Insulating sleeve

Insulating sleeve - MPS-IH BK - 0201731

<https://www.phoenixcontact.com/pc/products/0201731>

Insulating sleeve, color: black



Insulating sleeve

Insulating sleeve - ISH 2,5/0,2 - 3002843

<https://www.phoenixcontact.com/pc/products/3002843>

Insulating sleeve, color: white



Distribution block - PTFIX 6/12X2,5 BU

3273354

<https://www.phoenixcontact.com/pc/products/3273354>

Insulating sleeve

Insulating sleeve - ISH 2,5/0,5 - 3002856

<https://www.phoenixcontact.com/pc/products/3002856>



Insulating sleeve, color: gray

Insulating sleeve

Insulating sleeve - ISH 2,5/1,0 - 3002869

<https://www.phoenixcontact.com/pc/products/3002869>



Insulating sleeve, color: black

Distribution block - PTFIX 6/12X2,5 BU

3273354

<https://www.phoenixcontact.com/pc/products/3273354>

Marker strip

Marker strip - TML (EX3,8)R - 0801837

<https://www.phoenixcontact.com/pc/products/0801837>



Marker strip, Roll, white, unlabeled, can be labeled with: THERMOMARK E.300 (D)/600 (D), THERMOMARK ROLL 2.0, THERMOMARK ROLL, THERMOMARK ROLL X1, THERMOMARK ROLLMASTER 300/600, THERMOMARK X1.2, mounting type: adhesive, for terminal block width: 30000 mm, lettering field size: 30000 x 3.8 mm, Number of individual labels: 12

Marker strip

Marker strip - TML (104X3,8)R - 0801833

<https://www.phoenixcontact.com/pc/products/0801833>



Marker strip, Roll, white, unlabeled, can be labeled with: THERMOMARK E.300 (D)/600 (D), THERMOMARK ROLL 2.0, THERMOMARK ROLL, THERMOMARK ROLL X1, THERMOMARK ROLLMASTER 300/600, THERMOMARK X1.2, mounting type: adhesive, for terminal block width: 104 mm, lettering field size: 104 x 3.8 mm, Number of individual labels: 2500

Distribution block - PTFIX 6/12X2,5 BU

3273354

<https://www.phoenixcontact.com/pc/products/3273354>

Marker strip

Marker strip - TML (104X2,8)R - 0801832

<https://www.phoenixcontact.com/pc/products/0801832>



Marker strip, Roll, white, unlabeled, can be labeled with: THERMOMARK E.300 (D)/600 (D), THERMOMARK ROLL 2.0, THERMOMARK ROLL, THERMOMARK ROLL X1, THERMOMARK ROLLMASTER 300/600, THERMOMARK X1.2, mounting type: adhesive, for terminal block width: 104 mm, lettering field size: 104 x 2.8 mm, Number of individual labels: 2500

Marker strip

Marker strip - TML (EX2,8)R - 0801836

<https://www.phoenixcontact.com/pc/products/0801836>



Marker strip, Roll, white, unlabeled, can be labeled with: THERMOMARK E.300 (D)/600 (D), THERMOMARK ROLL 2.0, THERMOMARK ROLL, THERMOMARK ROLL X1, THERMOMARK ROLLMASTER 300/600, THERMOMARK X1.2, mounting type: adhesive, for terminal block width: 30000 mm, lettering field size: 30000 x 2.8 mm, Number of individual labels: 14

Distribution block - PTFIX 6/12X2,5 BU

3273354

<https://www.phoenixcontact.com/pc/products/3273354>

Marker card

Marker card - SK 2,8 REEL P5,2 WH CUS - 8199986

<https://www.phoenixcontact.com/pc/products/8199986>



Marker card, can be ordered: by card, white, labeled according to customer specifications, mounting type: adhesive, for terminal block width: 5.2 mm, lettering field size: continuous x 2.8 mm

Marker card

Marker card - SK 3,8 REEL P5,2 WH CUS - 8199989

<https://www.phoenixcontact.com/pc/products/8199989>



Marker card, can be ordered: by card, white, labeled according to customer specifications, mounting type: adhesive, for terminal block width: 5.2 mm, lettering field size: continuous x 3.8 mm

Distribution block - PTFIX 6/12X2,5 BU

3273354

<https://www.phoenixcontact.com/pc/products/3273354>

Marker for terminal blocks

Marker for terminal blocks - US-TML (104X3,8) - 0830768

<https://www.phoenixcontact.com/pc/products/0830768>



Marker for terminal blocks, Card, white, unlabeled, can be labeled with: BLUEMARK ID COLOR, BLUEMARK ID, THERMOMARK PRIME, THERMOMARK CARD 2.0, THERMOMARK CARD, mounting type: adhesive, lettering field size: 104 x 3.8 mm, Number of individual labels: 22

Marker for terminal blocks

Marker for terminal blocks - US-TML (104X2,8) - 0830767

<https://www.phoenixcontact.com/pc/products/0830767>



Marker for terminal blocks, Card, white, unlabeled, can be labeled with: BLUEMARK ID COLOR, BLUEMARK ID, THERMOMARK PRIME, THERMOMARK CARD 2.0, THERMOMARK CARD, mounting type: adhesive, lettering field size: 104 x 2.8 mm, Number of individual labels: 26

Distribution block - PTFIX 6/12X2,5 BU



3273354

<https://www.phoenixcontact.com/pc/products/3273354>

Marker card

Marker card - SK U/3,8 WH:UNBEDRUCKT - 0803906

<https://www.phoenixcontact.com/pc/products/0803906>



Marker card, Sheet, white, unlabeled, can be labeled with: PLOTMARK, CMS-P1-PLOTTER, Office printing systems, mounting type: adhesive, for terminal block width: 210 mm, lettering field size: 186 x 3.8 mm, Number of individual labels: 1440

Marker card

Marker card - SK U/2,8 WH:UNBEDRUCKT - 0803883

<https://www.phoenixcontact.com/pc/products/0803883>



Marker card, Sheet, white, unlabeled, can be labeled with: PLOTMARK, CMS-P1-PLOTTER, Office printing systems, mounting type: adhesive, for terminal block width: 210 mm, lettering field size: 186 x 2.8 mm, Number of individual labels: 3600

Distribution block - PTFIX 6/12X2,5 BU



3273354

<https://www.phoenixcontact.com/pc/products/3273354>

Label

Label - MM-TML (EX3,8)R C1 WH/BK - 1092026

<https://www.phoenixcontact.com/pc/products/1092026>



Label, Roll, white/black, unlabeled, can be labeled with: THERMOFOX, THERMOMARK GO, THERMOMARK GO.K, mounting type: adhesive, lettering field size: continuous x 2.8 mm

Phoenix Contact 2023 © - all rights reserved

<https://www.phoenixcontact.com>

PHOENIX CONTACT GmbH & Co. KG

Flachsmarktstraße 8

D-32825 Blomberg

+49 (0) 5235-3 00

info@phoenixcontact.com