

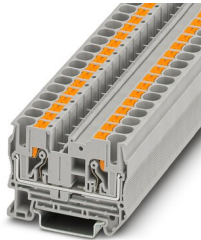
Feed-through terminal block - PT 6



3211813

<https://www.phoenixcontact.com/pc/products/3211813>

Please be informed that the data shown in this PDF document is generated from our Online Catalog. Please find the complete data in the user documentation. Our General Terms of Use for Downloads are valid.



Feed-through terminal block, nom. voltage: 1000 V, nominal current: 41 A, connection method: Push-in connection, Rated cross section: 6 mm², cross section: 0.5 mm² - 10 mm², mounting type: NS 35/7,5, NS 35/15, color: gray

Your advantages

- In addition to the testing facility in the double function shaft, all terminal blocks provide an additional test connection
- The Push-in connection terminal blocks are characterized by the system features of the CLIPLINE complete system and by easy and tool-free wiring of conductors with ferrules or solid conductors
- The compact design and front connection enable wiring in a confined space
- Tested for railway applications

Commercial Data

Item number	3211813
Packing unit	50 pc
Minimum order quantity	1 pc
Product Key	BE2211
Catalog Page	Page 111 (C-1-2019)
GTIN	4046356494656
Weight per Piece (including packing)	14.98 g
Weight per Piece (excluding packing)	13.98 g
Customs tariff number	85369010
Country of origin	CN

Feed-through terminal block - PT 6



3211813

<https://www.phoenixcontact.com/pc/products/3211813>

Technical Data

Product properties

Product type	Feed-through terminal block
Product family	PT
Number of positions	1
Area of application	Railway industry Machine building Plant engineering
Number of connections	2
Number of rows	1
Potentials	1

Insulation characteristics

Overvoltage category	III
Degree of pollution	3

Electrical properties

Rated surge voltage	8 kV
Maximum power dissipation for nominal condition	1.31 W

Connection data

Number of connections per level	2
Nominal cross section	6 mm ²
Stripping length	10 mm ... 12 mm
Internal cylindrical gage	A5
Connection in acc. with standard	IEC 60947-7-1
Conductor cross section solid	0.5 mm ² ... 10 mm ²
Cross section AWG	20 ... 8 (converted acc. to IEC)
Conductor cross section flexible	0.5 mm ² ... 10 mm ²
Conductor cross section, flexible [AWG]	20 ... 8 (converted acc. to IEC)
Flexible conductor cross section flexible (ferrule, w/o plastic sleeve)	0.5 mm ² ... 6 mm ²
Flexible conductor cross section (ferrule with plastic sleeve)	0.5 mm ² ... 6 mm ²
2 conductors with the same cross section, flexible, with TWIN ferrule with plastic sleeve	0.5 mm ² ... 2.5 mm ² When using TWIN ferrules, we recommend a minimum ferrule length of 13 mm.
Nominal current	41 A
Maximum load current	52 A (with 10 mm ² conductor cross section, rigid)
Nominal voltage	1000 V
Nominal cross section	6 mm ²

Connection cross sections directly pluggable

Conductor cross section solid	1 mm ² ... 10 mm ²
Flexible conductor cross section flexible (ferrule, w/o plastic sleeve)	1 mm ² ... 6 mm ²

Feed-through terminal block - PT 6



3211813

<https://www.phoenixcontact.com/pc/products/3211813>

Flexible conductor cross section (ferrule with plastic sleeve)	1 mm ² ... 6 mm ²
--	---

Ex data

Rated data (ATEX/IECEX)

Identification	□ II 2 GD Ex eb IIC Gb
Operating temperature range	-60 °C ... 110 °C
Ex-certified accessories	3212044 D-PT 6 3024481 ATP-ST 6 1204520 SZF 2-0,8X4,0 3022276 CLIPFIX 35-5 3022218 CLIPFIX 35
List of bridges	Plug-in bridge / FBS 2-8 / 3030284 Plug-in bridge / FBS 3-8 / 3030297 Plug-in bridge / FBS 4-8 / 3030307 Plug-in bridge / FBS 5-8 / 3030310 Plug-in bridge / FBS 6-8 / 3032470 Plug-in bridge / FBS 10-8 / 3030323
Bridge data	35 A / 6 mm ²
Ex temperature increase	40 K (36.5 A / 6 mm ²)
Rated voltage	550 V
for bridging with bridge	550 V
- At bridging between non-adjacent terminal blocks	275 V
- At bridging between non-adjacent terminal blocks via PE terminal block	275 V
- At cut-to-length bridging	220 V
- At cut-to-length bridging with cover	275 V
- At cut-to-length bridging with partition plate	550 V
Rated insulation voltage	500 V
output	(Permanent)

Ex level General

Rated current	36.5 A
Maximum load current	46 A
Contact resistance	0.48 mΩ

Ex connection data General

Nominal cross section	6 mm ²
Rated cross section AWG	10
Connection capacity rigid	0.5 mm ² ... 10 mm ²
Connection capacity AWG	20 ... 8
Connection capacity flexible	0.5 mm ² ... 6 mm ²
Connection capacity AWG	20 ... 10

Dimensions

Width	8.2 mm
-------	--------

Feed-through terminal block - PT 6



3211813

<https://www.phoenixcontact.com/pc/products/3211813>

End cover width	2.2 mm
Height	42.2 mm
Height NS 35/15	51 mm
Height NS 35/7,5	43.5 mm
Length	57.7 mm

Material specifications

Color	gray
Flammability rating according to UL 94	V0
Insulating material group	I
Insulating material	PA
Static insulating material application in cold	-60 °C
Temperature index of insulation material (DIN EN 60216-1 (VDE 0304-21))	125 °C
Relative insulation material temperature index (Elec., UL 746 B)	130 °C
Fire protection for rail vehicles (DIN EN 45545-2) R22	HL 1 - HL 3
Fire protection for rail vehicles (DIN EN 45545-2) R23	HL 1 - HL 3
Fire protection for rail vehicles (DIN EN 45545-2) R24	HL 1 - HL 3
Fire protection for rail vehicles (DIN EN 45545-2) R26	HL 1 - HL 3
Calorimetric heat release NFPA 130 (ASTM E 1354)	27,5 MJ/kg
Surface flammability NFPA 130 (ASTM E 162)	passed
Specific optical density of smoke NFPA 130 (ASTM E 662)	passed
Smoke gas toxicity NFPA 130 (SMP 800C)	passed

Electrical tests

Surge voltage test

Test voltage setpoint	9.8 kV
Result	Test passed

Temperature-rise test

Requirement temperature-rise test	Increase in temperature \leq 45 K
Result	Test passed
Short-time withstand current 6 mm ²	0.72 kA
Result	Test passed

Power-frequency withstand voltage

Test voltage setpoint	2.2 kV
Result	Test passed

Mechanical properties

Mechanical data

Open side panel	Yes
-----------------	-----

Mechanical tests

Feed-through terminal block - PT 6



3211813

<https://www.phoenixcontact.com/pc/products/3211813>

Mechanical strength

Result	Test passed
--------	-------------

Attachment on the carrier

DIN rail/fixing support	NS 35
Test force setpoint	5 N
Result	Test passed

Test for conductor damage and slackening

Rotation speed	10 rpm
Revolutions	135
Conductor cross section/weight	0.5 mm ² / 0.3 kg
	6 mm ² / 1.4 kg
	10 mm ² / 2 kg
Result	Test passed

Environmental and real-life conditions

Aging

Temperature cycles	192
	192
Result	Test passed
	Test passed

Needle-flame test

Time of exposure	30 s
Result	Test passed

Oscillation/broadband noise

Specification	DIN EN 50155 (VDE 0115-200):2018-05
Spectrum	Service life test category 2, bogie-mounted
Frequency	$f_1 = 5 \text{ Hz}$ to $f_2 = 250 \text{ Hz}$
ASD level	6.12 (m/s ²) ² /Hz
Acceleration	3.12g
Test duration per axis	5 h
Test directions	X-, Y- and Z-axis
Result	Test passed

Shocks

Specification	DIN EN 50155 (VDE 0115-200):2018-05
Pulse shape	Half-sine
Acceleration	30g
Shock duration	18 ms
Number of shocks per direction	3
Test directions	X-, Y- and Z-axis (pos. and neg.)
Result	Test passed

Feed-through terminal block - PT 6



3211813

<https://www.phoenixcontact.com/pc/products/3211813>

Ambient conditions

Ambient temperature (operation)	-60 °C ... 105 °C (max. short-term operating temperature RTI Elec.)
Ambient temperature (storage/transport)	-25 °C ... 60 °C (for a short time, not exceeding 24 h, -60 °C to +70 °C)
Ambient temperature (assembly)	-5 °C ... 70 °C
Ambient temperature (actuation)	-5 °C ... 70 °C
Permissible humidity (storage/transport)	30 % ... 70 %

Standards and regulations

Connection in acc. with standard	IEC 60947-7-1
----------------------------------	---------------

Mounting

Mounting type	NS 35/7,5
	NS 35/15

Feed-through terminal block - PT 6

3211813

<https://www.phoenixcontact.com/pc/products/3211813>

Drawings

Circuit diagram



Feed-through terminal block - PT 6



3211813

<https://www.phoenixcontact.com/pc/products/3211813>

Approvals

DNV Approval ID: TAE000010T				
	Nominal Voltage U_N	Nominal Current I_N	Cross Section AWG	Cross Section mm^2
			-	-

CSA Approval ID: 13631				
	Nominal Voltage U_N	Nominal Current I_N	Cross Section AWG	Cross Section mm^2
Use group B	600 V	40 A	20 - 8	-
Use group C	600 V	40 A	20 - 8	-
Use group D	600 V	5 A	20 - 8	-

CB IECEE CB Scheme Approval ID: DE1-64280				
---	--	--	--	--

EAC Approval ID: RU C-DE.BL08.B.00644				
--	--	--	--	--

cULus Recognized Approval ID: E60425				
	Nominal Voltage U_N	Nominal Current I_N	Cross Section AWG	Cross Section mm^2
Use group B	600 V	40 A	20 - 8	-
Use group C	600 V	40 A	20 - 8	-
Use group F	1000 V	40 A	20 - 8	-

LR Approval ID: 12/20038 (E3)				
----------------------------------	--	--	--	--

ClassNK Approval ID: 22ME0007				
----------------------------------	--	--	--	--

Feed-through terminal block - PT 6



3211813

<https://www.phoenixcontact.com/pc/products/3211813>



RS

Approval ID: 22.44.01.00083.250



BV

Approval ID: 37796/B1 BV



VDE Zeichengenehmigung

Approval ID: 40035239

	Nominal Voltage U_N	Nominal Current I_N	Cross Section AWG	Cross Section mm^2
Only flexible conductors	1000 V	41 A	-	0.5 - 6
Only rigid conductors	1000 V	41 A	-	0.5 - 10



PRS

Approval ID: TE/2107/880590/21

ABS

Approval ID: 21-2192245-PDA



cUL Recognized

Approval ID: E192998

	Nominal Voltage U_N	Nominal Current I_N	Cross Section AWG	Cross Section mm^2
	550 V	40 A	20 - 8	-



EAC Ex

Approval ID: RU C-DE.AB72.B.02351



IEC Ex

Approval ID: IECEx SEV13.0005U



UL Recognized

Approval ID: E192998

	Nominal Voltage U_N	Nominal Current I_N	Cross Section AWG	Cross Section mm^2
	550 V	40 A	20 - 8	-



ATEX

Approval ID: SEV13ATEX0159U

Feed-through terminal block - PT 6



3211813

<https://www.phoenixcontact.com/pc/products/3211813>



CCC

Approval ID: 2020322313000631



NEPSI

Approval ID: GYJ20.1198U



UKCA-EX

Approval ID: CML 22UKEX1224U

cULus Recognized

Feed-through terminal block - PT 6



3211813

<https://www.phoenixcontact.com/pc/products/3211813>

Classifications

ECLASS

ECLASS-9.0	27141120
ECLASS-10.0.1	27141120
ECLASS-11.0	27141120

ETIM

ETIM 8.0	EC000897
----------	----------

UNSPSC

UNSPSC 21.0	39121400
-------------	----------

Feed-through terminal block - PT 6



3211813

<https://www.phoenixcontact.com/pc/products/3211813>

Environmental Product Compliance

China RoHS	Environmentally friendly use period: unlimited = EFUP-e
	No hazardous substances above threshold values

Feed-through terminal block - PT 6

3211813

<https://www.phoenixcontact.com/pc/products/3211813>

Accessories

 Note: Applying some accessories below might limit this product.

Plug-in bridge

Plug-in bridge - FBS 2-8 - 3030284

<https://www.phoenixcontact.com/pc/products/3030284>



Plug-in bridge, pitch: 8.2 mm, number of positions: 2, color: red

 Max. current carrying capacity: 41 A

Plug-in bridge

Plug-in bridge - FBS 3-8 - 3030297

<https://www.phoenixcontact.com/pc/products/3030297>



Plug-in bridge, pitch: 8.2 mm, number of positions: 3, color: red

 Max. current carrying capacity: 41 A

Feed-through terminal block - PT 6

3211813

<https://www.phoenixcontact.com/pc/products/3211813>


Plug-in bridge

Plug-in bridge - FBS 4-8 - 3030307

<https://www.phoenixcontact.com/pc/products/3030307>



Plug-in bridge, pitch: 8.2 mm, number of positions: 4, color: red

 Max. current carrying capacity: 41 A


Plug-in bridge

Plug-in bridge - FBS 5-8 - 3030310

<https://www.phoenixcontact.com/pc/products/3030310>



Plug-in bridge, pitch: 8.2 mm, number of positions: 5, color: red

 Max. current carrying capacity: 41 A

Feed-through terminal block - PT 6

3211813

<https://www.phoenixcontact.com/pc/products/3211813>




Plug-in bridge

Plug-in bridge - FBS 6-8 - 3032470

<https://www.phoenixcontact.com/pc/products/3032470>



Plug-in bridge, pitch: 8.2 mm, number of positions: 6, color: red

 Max. current carrying capacity: 41 A


Plug-in bridge

Plug-in bridge - FBS 10-8 - 3030323

<https://www.phoenixcontact.com/pc/products/3030323>



Plug-in bridge, pitch: 8.2 mm, number of positions: 10, color: red

 Max. current carrying capacity: 41 A

Feed-through terminal block - PT 6

3211813

<https://www.phoenixcontact.com/pc/products/3211813>


Plug-in bridge

Plug-in bridge - FBS 2-8 CT - 3033830

<https://www.phoenixcontact.com/pc/products/3033830>



Plug-in bridge, pitch: 8.2 mm, number of positions: 2, color: orange

 Max. current carrying capacity: 41 A


Plug-in bridge

Plug-in bridge - FBS 3-8 CT - 3033831

<https://www.phoenixcontact.com/pc/products/3033831>



Plug-in bridge, pitch: 8.2 mm, number of positions: 3, color: orange

 Max. current carrying capacity: 41 A

Feed-through terminal block - PT 6

3211813

<https://www.phoenixcontact.com/pc/products/3211813>


Plug-in bridge

Plug-in bridge - FBS 4-8 CT - 3033832

<https://www.phoenixcontact.com/pc/products/3033832>



Plug-in bridge, pitch: 8.2 mm, number of positions: 4, color: orange

 Max. current carrying capacity: 41 A

Plug-in bridge

Plug-in bridge - FBS 10-8 CT - 3033833

<https://www.phoenixcontact.com/pc/products/3033833>



Plug-in bridge, pitch: 8.2 mm, number of positions: 10, color: orange

 Max. current carrying capacity: 41 A

Feed-through terminal block - PT 6

3211813

<https://www.phoenixcontact.com/pc/products/3211813>

Plug-in bridge

Plug-in bridge - FBS 2-8 BU - 3032567

<https://www.phoenixcontact.com/pc/products/3032567>



Plug-in bridge, pitch: 8.2 mm, number of positions: 2, color: blue

 Max. current carrying capacity: 41 A

Plug-in bridge

Plug-in bridge - FBS 3-8 BU - 3032570

<https://www.phoenixcontact.com/pc/products/3032570>



Plug-in bridge, pitch: 8.2 mm, number of positions: 3, color: blue

 Max. current carrying capacity: 41 A

Feed-through terminal block - PT 6

3211813

<https://www.phoenixcontact.com/pc/products/3211813>


Plug-in bridge

Plug-in bridge - FBS 4-8 BU - 3032583

<https://www.phoenixcontact.com/pc/products/3032583>



Plug-in bridge, pitch: 8.2 mm, number of positions: 4, color: blue

 Max. current carrying capacity: 41 A


Plug-in bridge

Plug-in bridge - FBS 5-8 BU - 3032596

<https://www.phoenixcontact.com/pc/products/3032596>



Plug-in bridge, pitch: 8.2 mm, number of positions: 5, color: blue

 Max. current carrying capacity: 41 A

Feed-through terminal block - PT 6

3211813

<https://www.phoenixcontact.com/pc/products/3211813>


Plug-in bridge

Plug-in bridge - FBS 6-8 BU - 3032677

<https://www.phoenixcontact.com/pc/products/3032677>



Plug-in bridge, pitch: 8.2 mm, number of positions: 6, color: blue

 Max. current carrying capacity: 41 A


Plug-in bridge

Plug-in bridge - FBS 10-8 BU - 3032606

<https://www.phoenixcontact.com/pc/products/3032606>



Plug-in bridge, pitch: 8.2 mm, number of positions: 10, color: blue

 Max. current carrying capacity: 41 A

Feed-through terminal block - PT 6

3211813

<https://www.phoenixcontact.com/pc/products/3211813>


Plug-in bridge

Plug-in bridge - FBS 2-8 GY - 3032621

<https://www.phoenixcontact.com/pc/products/3032621>



Plug-in bridge, pitch: 8.2 mm, number of positions: 2, color: gray

 Max. current carrying capacity: 41 A


Plug-in bridge

Plug-in bridge - FBS 3-8 GY - 3032622

<https://www.phoenixcontact.com/pc/products/3032622>



Plug-in bridge, pitch: 8.2 mm, number of positions: 3, color: gray

 Max. current carrying capacity: 41 A

Feed-through terminal block - PT 6

3211813

<https://www.phoenixcontact.com/pc/products/3211813>


Plug-in bridge

Plug-in bridge - FBS 4-8 GY - 3032635

<https://www.phoenixcontact.com/pc/products/3032635>



Plug-in bridge, pitch: 8.2 mm, number of positions: 4, color: gray

 Max. current carrying capacity: 41 A


Plug-in bridge

Plug-in bridge - FBS 5-8 GY - 3032648

<https://www.phoenixcontact.com/pc/products/3032648>



Plug-in bridge, pitch: 8.2 mm, number of positions: 5, color: gray

 Max. current carrying capacity: 41 A

Feed-through terminal block - PT 6

3211813

<https://www.phoenixcontact.com/pc/products/3211813>

Plug-in bridge

Plug-in bridge - FBS 6-8 GY - 3032664

<https://www.phoenixcontact.com/pc/products/3032664>



Plug-in bridge, pitch: 8.2 mm, number of positions: 6, color: gray

 Max. current carrying capacity: 41 A


Plug-in bridge

Plug-in bridge - FBS 10-8 GY - 3032651

<https://www.phoenixcontact.com/pc/products/3032651>



Plug-in bridge, pitch: 8.2 mm, number of positions: 10, color: gray

 Max. current carrying capacity: 41 A

Feed-through terminal block - PT 6

3211813

<https://www.phoenixcontact.com/pc/products/3211813>


Short-circuit connector

Short-circuit connector - FBSRH 2-8 - 3033802

<https://www.phoenixcontact.com/pc/products/3033802>



Short-circuit connector, pitch: 8.2 mm, number of positions: 2, color: red

 Max. current carrying capacity: 32 A

Short-circuit connector

Short-circuit connector - FBSRH 3-8 - 3033803

<https://www.phoenixcontact.com/pc/products/3033803>



Short-circuit connector, pitch: 8.2 mm, number of positions: 3, color: red

 Max. current carrying capacity: 32 A

Feed-through terminal block - PT 6

3211813

<https://www.phoenixcontact.com/pc/products/3211813>

Short-circuit connector

Short-circuit connector - FBSRH 4-8 - 3033804

<https://www.phoenixcontact.com/pc/products/3033804>



Short-circuit connector, pitch: 8.2 mm, number of positions: 4, color: red

 Max. current carrying capacity: 32 A

Plug-in bridge

Plug-in bridge - FBSR 2-8 - 3033808

<https://www.phoenixcontact.com/pc/products/3033808>



Plug-in bridge, pitch: 8.2 mm, number of positions: 2, color: red

 Max. current carrying capacity: 32 A

Feed-through terminal block - PT 6

3211813

<https://www.phoenixcontact.com/pc/products/3211813>

Plug-in bridge

Plug-in bridge - FBSR 3-8 - 3001597

<https://www.phoenixcontact.com/pc/products/3001597>



Plug-in bridge, pitch: 8.2 mm, number of positions: 3, color: red

 Max. current carrying capacity: 32 A

Plug-in bridge

Plug-in bridge - FBSR 4-8 - 3000585

<https://www.phoenixcontact.com/pc/products/3000585>



Plug-in bridge, pitch: 8.2 mm, number of positions: 4, color: red

 Max. current carrying capacity: 32 A

Feed-through terminal block - PT 6

3211813

<https://www.phoenixcontact.com/pc/products/3211813>

Plug-in bridge

Plug-in bridge - FBSR 5-8 - 3033809

<https://www.phoenixcontact.com/pc/products/3033809>



Plug-in bridge, pitch: 8.2 mm, number of positions: 5, color: red

 Max. current carrying capacity: 32 A

Plug-in bridge

Plug-in bridge - FBSR 10-8 - 3001599

<https://www.phoenixcontact.com/pc/products/3001599>



Plug-in bridge, pitch: 8.2 mm, number of positions: 10, color: red

 Max. current carrying capacity: 32 A

Feed-through terminal block - PT 6

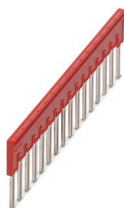
3211813

<https://www.phoenixcontact.com/pc/products/3211813>

Plug-in bridge

Plug-in bridge - FBSR 16-8 - 3033816

<https://www.phoenixcontact.com/pc/products/3033816>



Plug-in bridge, pitch: 8.2 mm, number of positions: 16, color: red

 Max. current carrying capacity: 32 A

Switching jumper

Switching jumper - SB-MER 2-8 - 3000587

<https://www.phoenixcontact.com/pc/products/3000587>



Switching jumper, pitch: 8.2 mm, number of positions: 2, length: 25 mm, color: gray/orange

 Max. current carrying capacity: 24 A

Feed-through terminal block - PT 6

3211813

<https://www.phoenixcontact.com/pc/products/3211813>

Switching jumper

Switching jumper - SB-MER 3-8 - 3000588

<https://www.phoenixcontact.com/pc/products/3000588>



Switching jumper, pitch: 8.2 mm, number of positions: 3, length: 25 mm, color: gray/orange

 Max. current carrying capacity: 24 A

Switching jumper

Switching jumper - SB-MER 4-8 - 3000589

<https://www.phoenixcontact.com/pc/products/3000589>



Switching jumper, pitch: 8.2 mm, number of positions: 4, length: 25 mm, color: gray/orange

 Max. current carrying capacity: 24 A

Feed-through terminal block - PT 6

3211813

<https://www.phoenixcontact.com/pc/products/3211813>


Reducing bridge

Reducing bridge - RB ST 6-(2,5/4) - 3030860

<https://www.phoenixcontact.com/pc/products/3030860>



Reducing bridge, pitch: 9 mm, number of positions: 2, length: 30 mm, color: red

 Max. current carrying capacity: 35 A


Reducing bridge

Reducing bridge - RB 16-6 - 3047072

<https://www.phoenixcontact.com/pc/products/3047072>



Reducing bridge, pitch: 12.2 mm, number of positions: 2, color: red

 Max. current carrying capacity: 37 A

Feed-through terminal block - PT 6

3211813

<https://www.phoenixcontact.com/pc/products/3211813>

Reducing bridge

Reducing bridge - RB ST 6-1,5/S - 3213250

<https://www.phoenixcontact.com/pc/products/3213250>



Reducing bridge, pitch: 8 mm, number of positions: 2, length: 30 mm, color: red

 Max. current carrying capacity: 24 A

End cover

End cover - D-PT 6 - 3212044

<https://www.phoenixcontact.com/pc/products/3212044>



End cover, length: 57.7 mm, width: 2.2 mm, height: 36 mm, color: gray

Feed-through terminal block - PT 6

3211813

<https://www.phoenixcontact.com/pc/products/3211813>

Partition plate

Partition plate - ATP-ST 6 - 3024481

<https://www.phoenixcontact.com/pc/products/3024481>

Partition plate, length: 73.5 mm, width: 2 mm, height: 47.2 mm, color: gray



Screwdriver

Screwdriver - SZF 2-0,8X4,0 - 1204520

<https://www.phoenixcontact.com/pc/products/1204520>

Actuation tool, for ST terminal blocks, also suitable for use as a bladed screwdriver, size: 0.8 x 4.0 x 100 mm, 2-component grip, with non-slip grip



Feed-through terminal block - PT 6

3211813

<https://www.phoenixcontact.com/pc/products/3211813>

Warning label

Warning label - WS PT 6 - 1029029

<https://www.phoenixcontact.com/pc/products/1029029>



Warning label, yellow/black, labeled: Lightning flash, mounting type: plug in, for terminal block width: 8.2 mm

DIN rail perforated

DIN rail perforated - NS 35/ 7,5 PERF 2000MM - 0801733

<https://www.phoenixcontact.com/pc/products/0801733>



DIN rail perforated, acc. to EN 60715, material: Steel, galvanized, passivated with a thick layer, Standard profile, color: silver, Pack of 25 (50 m)

Feed-through terminal block - PT 6

3211813

<https://www.phoenixcontact.com/pc/products/3211813>

DIN rail, unperforated

DIN rail, unperforated - NS 35/ 7,5 UNPERF 2000MM - 0801681

<https://www.phoenixcontact.com/pc/products/0801681>



DIN rail, unperforated, acc. to EN 60715, material: Steel, galvanized, passivated with a thick layer, Standard profile, color: silver, Pack of 25 (50 m)

DIN rail perforated

DIN rail perforated - NS 35/ 7,5 WH PERF 2000MM - 1204119

<https://www.phoenixcontact.com/pc/products/1204119>



DIN rail perforated, acc. to EN 60715, material: Steel, Galvanized, white passivated, Standard profile, color: silver, Pack of 25 (50 m)

Feed-through terminal block - PT 6

3211813

<https://www.phoenixcontact.com/pc/products/3211813>

DIN rail, unperforated

DIN rail, unperforated - NS 35/ 7,5 WH UNPERF 2000MM-VPE 10 - 1204122

<https://www.phoenixcontact.com/pc/products/1204122>



DIN rail, unperforated, acc. to EN 60715, material: Steel, Galvanized, white passivated, Standard profile, color: silver, Pack of 10 (20 m)

DIN rail, unperforated

DIN rail, unperforated - NS 35/ 7,5 AL UNPERF 2000MM - 0801704

<https://www.phoenixcontact.com/pc/products/0801704>



DIN rail, unperforated, acc. to EN 60715, material: Aluminum, uncoated, Standard profile, color: silver, Pack of 25 (50 m)

Feed-through terminal block - PT 6

3211813

<https://www.phoenixcontact.com/pc/products/3211813>

DIN rail perforated

DIN rail perforated - NS 35/ 7,5 ZN PERF 2000MM - 1206421

<https://www.phoenixcontact.com/pc/products/1206421>



DIN rail perforated, acc. to EN 60715, material: Steel, galvanized, Standard profile, color: silver, Pack of 25 (50 m)

DIN rail, unperforated

DIN rail, unperforated - NS 35/ 7,5 ZN UNPERF 2000MM - 1206434

<https://www.phoenixcontact.com/pc/products/1206434>



DIN rail, unperforated, acc. to EN 60715, material: Steel, galvanized, Standard profile, color: silver, Pack of 25 (50 m)

Feed-through terminal block - PT 6

3211813

<https://www.phoenixcontact.com/pc/products/3211813>

DIN rail, unperforated

DIN rail, unperforated - NS 35/ 7,5 CU UNPERF 2000MM-VPE 10 - 0801762

<https://www.phoenixcontact.com/pc/products/0801762>



DIN rail, unperforated, acc. to EN 60715, material: Copper, uncoated, Standard profile, color: copper-colored, Pack of 10 (20 m)

End cap

End cap - NS 35/ 7,5 CAP - 1206560

<https://www.phoenixcontact.com/pc/products/1206560>

DIN rail end piece, for DIN rail NS 35/7.5



Feed-through terminal block - PT 6

3211813

<https://www.phoenixcontact.com/pc/products/3211813>

DIN rail perforated

DIN rail perforated - NS 35/15 PERF 2000MM - 1201730

<https://www.phoenixcontact.com/pc/products/1201730>



DIN rail perforated, similar to EN 60715, material: Steel, galvanized, passivated with a thick layer, Standard profile, color: silver, Pack of 25 (50 m)

DIN rail, unperforated

DIN rail, unperforated - NS 35/15 UNPERF 2000MM - 1201714

<https://www.phoenixcontact.com/pc/products/1201714>



DIN rail, unperforated, similar to EN 60715, material: Steel, galvanized, passivated with a thick layer, Standard profile, color: silver, Pack of 25 (50 m)

Feed-through terminal block - PT 6

3211813

<https://www.phoenixcontact.com/pc/products/3211813>



DIN rail perforated

DIN rail perforated - NS 35/15 WH PERF 2000MM - 0806602

<https://www.phoenixcontact.com/pc/products/0806602>



DIN rail perforated, similar to EN 60715, material: Steel, Galvanized, white passivated, Standard profile, color: white, Pack of 25 (50 m)

DIN rail, unperforated

DIN rail, unperforated - NS 35/15 WH UNPERF 2000MM-VPE 10 - 1204135

<https://www.phoenixcontact.com/pc/products/1204135>



DIN rail, unperforated, similar to EN 60715, material: Steel, Galvanized, white passivated, Standard profile, color: silver, Pack of 10 (20 m)

Feed-through terminal block - PT 6

3211813

<https://www.phoenixcontact.com/pc/products/3211813>

DIN rail, unperforated

DIN rail, unperforated - NS 35/15 AL UNPERF 2000MM - 1201756

<https://www.phoenixcontact.com/pc/products/1201756>



DIN rail, unperforated, similar to EN 60715, material: Aluminum, uncoated, Standard profile, color: silver

DIN rail perforated

DIN rail perforated - NS 35/15 ZN PERF 2000MM - 1206599

<https://www.phoenixcontact.com/pc/products/1206599>



DIN rail perforated, similar to EN 60715, material: Steel, galvanized, Standard profile, color: silver, Pack of 25 (50 m)

Feed-through terminal block - PT 6

3211813

<https://www.phoenixcontact.com/pc/products/3211813>

DIN rail, unperforated

DIN rail, unperforated - NS 35/15 ZN UNPERF 2000MM - 1206586

<https://www.phoenixcontact.com/pc/products/1206586>



DIN rail, unperforated, similar to EN 60715, material: Steel, galvanized, Standard profile, color: silver, Pack of 25 (50 m)

DIN rail, unperforated

DIN rail, unperforated - NS 35/15 CU UNPERF 2000MM-VPE 10 - 1201895

<https://www.phoenixcontact.com/pc/products/1201895>



DIN rail, unperforated, similar to EN 60715, material: Copper, uncoated, Standard profile, color: copper-colored, Pack of 10 (20 m)

Feed-through terminal block - PT 6

3211813

<https://www.phoenixcontact.com/pc/products/3211813>

End cap

End cap - NS 35/15 CAP - 1206573

<https://www.phoenixcontact.com/pc/products/1206573>

DIN rail end piece, for DIN rail NS 35/15



DIN rail, unperforated

DIN rail, unperforated - NS 35/15-2,3 UNPERF 2000MM-VPE 10 - 1201798

<https://www.phoenixcontact.com/pc/products/1201798>



DIN rail, unperforated, acc. to EN 60715, material: Steel, galvanized, passivated with a thick layer, Standard profile 2.3 mm, color: silver, Pack of 10 (20 m)

Feed-through terminal block - PT 6

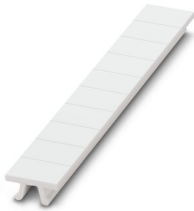
3211813

<https://www.phoenixcontact.com/pc/products/3211813>

Zack marker strip

Zack marker strip - ZB 8:UNBEDRUCKT - 1052002

<https://www.phoenixcontact.com/pc/products/1052002>

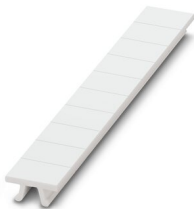


Zack marker strip, Strip, white, unlabeled, can be labeled with: CMS-P1-PLOTTER, PLOTMARK, mounting type: snapped, for terminal block width: 8.2 mm, lettering field size: 10.5 x 8.15 mm, Number of individual labels: 10

Zack marker strip

Zack marker strip - ZB 8 CUS - 0825011

<https://www.phoenixcontact.com/pc/products/0825011>



Zack marker strip, can be ordered: Strip, white, labeled according to customer specifications, mounting type: snap into tall marker groove, for terminal block width: 8.2 mm, lettering field size: 10.5 x 8.15 mm, Number of individual labels: 10

Feed-through terminal block - PT 6

3211813

<https://www.phoenixcontact.com/pc/products/3211813>

Marker for terminal blocks

Marker for terminal blocks - UC-TM 8 - 0818072

<https://www.phoenixcontact.com/pc/products/0818072>



Marker for terminal blocks, Sheet, white, unlabeled, can be labeled with: BLUEMARK ID COLOR, BLUEMARK ID, BLUEMARK CLED, PLOTMARK, CMS-P1-PLOTTER, mounting type: snapped, for terminal block width: 8.2 mm, lettering field size: 7.6 x 10.5 mm, Number of individual labels: 56

Marker for terminal blocks

Marker for terminal blocks - UC-TM 8 CUS - 0824597

<https://www.phoenixcontact.com/pc/products/0824597>



Marker for terminal blocks, can be ordered: by sheet, white, labeled according to customer specifications, mounting type: snap into tall marker groove, for terminal block width: 8.2 mm, lettering field size: 7.6 x 10.5 mm, Number of individual labels: 56

Feed-through terminal block - PT 6

3211813

<https://www.phoenixcontact.com/pc/products/3211813>

Marker for terminal blocks

Marker for terminal blocks - UCT-TM 8 - 0828740

<https://www.phoenixcontact.com/pc/products/0828740>



Marker for terminal blocks, Sheet, white, unlabeled, can be labeled with: TOPMARK NEO, TOPMARK LASER, BLUEMARK ID COLOR, BLUEMARK ID, BLUEMARK CLED, THERMOMARK PRIME, THERMOMARK CARD 2.0, THERMOMARK CARD, mounting type: snapped, for terminal block width: 8.2 mm, lettering field size: 7.6 x 10.5 mm, Number of individual labels: 42

Marker for terminal blocks

Marker for terminal blocks - UCT-TM 8 CUS - 0829616

<https://www.phoenixcontact.com/pc/products/0829616>



Marker for terminal blocks, can be ordered: by sheet, white, labeled according to customer specifications, mounting type: snap into tall marker groove, for terminal block width: 8.2 mm, lettering field size: 7.6 x 10.5 mm, Number of individual labels: 42

Feed-through terminal block - PT 6

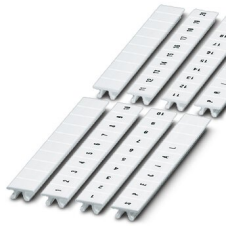
3211813

<https://www.phoenixcontact.com/pc/products/3211813>

Zack marker strip

Zack marker strip - ZB 8,LGS:FORTL.ZAHLEN - 1052015

<https://www.phoenixcontact.com/pc/products/1052015>

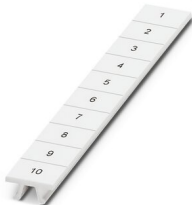


Zack marker strip, Strip, white, labeled, can be labeled with: CMS-P1-PLOTTER, printed horizontally: consecutive numbers 1 ... 10, 11 ... 20, etc. up to 91 ... 100, mounting type: snapped, for terminal block width: 8.2 mm, lettering field size: 10. 5 x 8.15 mm, Number of individual labels: 10

Zack marker strip

Zack marker strip - ZB 8,QR:FORTL.ZAHLEN - 1052028

<https://www.phoenixcontact.com/pc/products/1052028>



Zack marker strip, Strip, white, labeled, can be labeled with: CMS-P1-PLOTTER, Printed vertically: consecutive numbers 1 ... 10, 11 ... 20, etc. up to 91 ... 100, mounting type: snapped, for terminal block width: 8.2 mm, lettering field size: 10. 5 x 8.15 mm, Number of individual labels: 10

Feed-through terminal block - PT 6

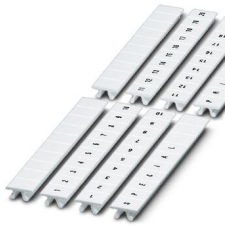
3211813

<https://www.phoenixcontact.com/pc/products/3211813>

Marker for terminal blocks

Marker for terminal blocks - ZB 8,LGS:L1-N,PE - 1052413

<https://www.phoenixcontact.com/pc/products/1052413>



Marker for terminal blocks, Strip, white, labeled, can be labeled with: CMS-P1-PLOTTER, horizontal: L1, L2, L3, N, PE, L1, L2, L3, N, PE, mounting type: snapped, for terminal block width: 8.2 mm, lettering field size: 10.5 x 8.15 mm, Number of individual labels: 10

Zack Marker strip, flat

Zack Marker strip, flat - ZBF 8:UNBEDRUCKT - 0808781

<https://www.phoenixcontact.com/pc/products/0808781>



Zack Marker strip, flat, Strip, white, unlabeled, can be labeled with: PLOTMARK, CMS-P1-PLOTTER, mounting type: snapped, for terminal block width: 8 mm, lettering field size: 5.15 x 8.15 mm, Number of individual labels: 10

Feed-through terminal block - PT 6

3211813

<https://www.phoenixcontact.com/pc/products/3211813>

Zack Marker strip, flat

Zack Marker strip, flat - ZBF 8 CUS - 0825030

<https://www.phoenixcontact.com/pc/products/0825030>



Zack Marker strip, flat, can be ordered: Strip, white, labeled according to customer specifications, mounting type: snap into flat marker groove, for terminal block width: 8 mm, lettering field size: 5.15 x 8.15 mm, Number of individual labels: 10

Zack Marker strip, flat

Zack Marker strip, flat - ZBF 8,LGS:FORTL.ZAHLEN - 0808804

<https://www.phoenixcontact.com/pc/products/0808804>



Zack Marker strip, flat, Strip, white, labeled, printed horizontally: consecutive numbers 1 ... 10, 11 ... 20, etc. up to 101 ... 110, mounting type: snapped, for terminal block width: 8 mm, lettering field size: 5.15 x 8.15 mm, Number of individual labels: 10

Feed-through terminal block - PT 6

3211813

<https://www.phoenixcontact.com/pc/products/3211813>

Marker for terminal blocks

Marker for terminal blocks - UC-TMF 8 - 0818137

<https://www.phoenixcontact.com/pc/products/0818137>



Marker for terminal blocks, Sheet, white, unlabeled, can be labeled with: BLUEMARK ID COLOR, BLUEMARK ID, BLUEMARK CLED, PLOTMARK, CMS-P1-PLOTTER, mounting type: snapped, for terminal block width: 8.2 mm, lettering field size: 7.6 x 5.1 mm, Number of individual labels: 56

Marker for terminal blocks

Marker for terminal blocks - UC-TMF 8 CUS - 0824654

<https://www.phoenixcontact.com/pc/products/0824654>



Marker for terminal blocks, can be ordered: by sheet, white, labeled according to customer specifications, mounting type: snap into flat marker groove, for terminal block width: 8.2 mm, lettering field size: 7.6 x 5.1 mm, Number of individual labels: 56

Feed-through terminal block - PT 6

3211813

<https://www.phoenixcontact.com/pc/products/3211813>

Marker for terminal blocks

Marker for terminal blocks - UCT-TMF 8 - 0828748

<https://www.phoenixcontact.com/pc/products/0828748>



Marker for terminal blocks, Sheet, white, unlabeled, can be labeled with: TOPMARK NEO, TOPMARK LASER, BLUEMARK ID COLOR, BLUEMARK ID, BLUEMARK CLED, THERMOMARK PRIME, THERMOMARK CARD 2.0, THERMOMARK CARD, mounting type: snapped, for terminal block width: 8.2 mm, lettering field size: 7.4 x 4.7 mm, Number of individual labels: 42

Marker for terminal blocks

Marker for terminal blocks - UCT-TMF 8 CUS - 0829672

<https://www.phoenixcontact.com/pc/products/0829672>



Marker for terminal blocks, can be ordered: by sheet, white, labeled according to customer specifications, mounting type: snap into flat marker groove, for terminal block width: 8.2 mm, lettering field size: 7.4 x 4.7 mm, Number of individual labels: 42

Feed-through terminal block - PT 6

3211813

<https://www.phoenixcontact.com/pc/products/3211813>

Test plugs

Test plugs - MPS-MT - 0201744

<https://www.phoenixcontact.com/pc/products/0201744>



Test plugs, with solder connection up to 1 mm² conductor cross section, color: gray

Insulating sleeve

Insulating sleeve - MPS-IH WH - 0201663

<https://www.phoenixcontact.com/pc/products/0201663>



Insulating sleeve, color: white

Feed-through terminal block - PT 6

3211813

<https://www.phoenixcontact.com/pc/products/3211813>



Insulating sleeve

Insulating sleeve - MPS-IH RD - 0201676

<https://www.phoenixcontact.com/pc/products/0201676>

Insulating sleeve, color: red

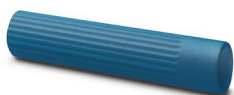


Insulating sleeve

Insulating sleeve - MPS-IH BU - 0201689

<https://www.phoenixcontact.com/pc/products/0201689>

Insulating sleeve, color: blue



Feed-through terminal block - PT 6

3211813

<https://www.phoenixcontact.com/pc/products/3211813>

Insulating sleeve

Insulating sleeve - MPS-IH YE - 0201692

<https://www.phoenixcontact.com/pc/products/0201692>

Insulating sleeve, color: yellow



Insulating sleeve

Insulating sleeve - MPS-IH GN - 0201702

<https://www.phoenixcontact.com/pc/products/0201702>

Insulating sleeve, color: green



Feed-through terminal block - PT 6

3211813

<https://www.phoenixcontact.com/pc/products/3211813>



Insulating sleeve

Insulating sleeve - MPS-IH GY - 0201728

<https://www.phoenixcontact.com/pc/products/0201728>

Insulating sleeve, color: gray



Insulating sleeve

Insulating sleeve - MPS-IH BK - 0201731

<https://www.phoenixcontact.com/pc/products/0201731>

Insulating sleeve, color: black



Feed-through terminal block - PT 6

3211813

<https://www.phoenixcontact.com/pc/products/3211813>

Test adapter

Test adapter - PAI-4-FIX BU - 3032729

<https://www.phoenixcontact.com/pc/products/3032729>



Test adapter, Touch proof against unintentional direct contact according to DIN EN 50274 when plugged in, for 4 mm test plug and terminal blocks with 8.2 mm pitch, color: blue

Test adapter

Test adapter - PAI-4-FIX OG - 3034455

<https://www.phoenixcontact.com/pc/products/3034455>



4 mm test adapter, for terminal blocks with 8.2 mm pitch

Feed-through terminal block - PT 6

3211813

<https://www.phoenixcontact.com/pc/products/3211813>

Test adapter

Test adapter - PAI-4-FIX YE - 3032745

<https://www.phoenixcontact.com/pc/products/3032745>



Test adapter, Touch proof against unintentional direct contact according to DIN EN 50274 when plugged in, for 4 mm test plug and terminal blocks with 8.2 mm pitch, color: yellow

Test adapter

Test adapter - PAI-4-FIX RD - 3032732

<https://www.phoenixcontact.com/pc/products/3032732>



Test adapter, Touch proof against unintentional direct contact according to DIN EN 50274 when plugged in, for 4 mm test plug and terminal blocks with 8.2 mm pitch, color: red

Feed-through terminal block - PT 6

3211813

<https://www.phoenixcontact.com/pc/products/3211813>

Test adapter

Test adapter - PAI-4-FIX GN - 3032758

<https://www.phoenixcontact.com/pc/products/3032758>



Test adapter, Touch proof against unintentional direct contact according to DIN EN 50274 when plugged in, for 4 mm test plug and terminal blocks with 8.2 mm pitch, color: green

Test adapter

Test adapter - PAI-4-FIX BK - 3032774

<https://www.phoenixcontact.com/pc/products/3032774>



Test adapter, Touch proof against unintentional direct contact according to DIN EN 50274 when plugged in, for 4 mm test plug and terminal blocks with 8.2 mm pitch, color: black

Feed-through terminal block - PT 6

3211813

<https://www.phoenixcontact.com/pc/products/3211813>

Test adapter

Test adapter - PAI-4-FIX GY - 3032790

<https://www.phoenixcontact.com/pc/products/3032790>



Test adapter, Touch proof against unintentional direct contact according to DIN EN 50274 when plugged in, for 4 mm test plug and terminal blocks with 8.2 mm pitch, color: gray

Test adapter

Test adapter - PAI-4-FIX VT - 3032761

<https://www.phoenixcontact.com/pc/products/3032761>



Test adapter, Touch proof against unintentional direct contact according to DIN EN 50274 when plugged in, for 4 mm test plug and terminal blocks with 4.2 mm .. 8.2 mm pitch, color: violet

Feed-through terminal block - PT 6

3211813

<https://www.phoenixcontact.com/pc/products/3211813>

Test adapter

Test adapter - PAI-4-FIX BN - 3032787

<https://www.phoenixcontact.com/pc/products/3032787>



Test adapter, Touch proof against unintentional direct contact according to DIN EN 50274 when plugged in, for 4 mm test plug and terminal blocks with 8.2 mm pitch, color: brown

Test adapter

Test adapter - PAI-4-FIX WH - 3032797

<https://www.phoenixcontact.com/pc/products/3032797>



4 mm test adapter, for terminal blocks with 8.2 mm pitch

Feed-through terminal block - PT 6

3211813

<https://www.phoenixcontact.com/pc/products/3211813>

Test adapter

Test adapter - PAIS-4-FIX GY - 3032791

<https://www.phoenixcontact.com/pc/products/3032791>



Test adapter, Touch proof against unintentional direct contact according to DIN EN 50274 when plugged in, for 4 mm test plug and terminal blocks with 5.2 mm, 6.2 mm, and 8.2 mm pitch, color: gray

Test adapter

Test adapter - PAIS-4-FIX BK - 3032792

<https://www.phoenixcontact.com/pc/products/3032792>



Test adapter, Touch proof against unintentional direct contact according to DIN EN 50274 when plugged in, for 4 mm test plug and terminal blocks with 5.2 mm, 6.2 mm, and 8.2 mm pitch, color: black

Feed-through terminal block - PT 6

3211813

<https://www.phoenixcontact.com/pc/products/3211813>

Test adapter

Test adapter - PAIS-4-FIX RD - 3032793

<https://www.phoenixcontact.com/pc/products/3032793>



Test adapter, Do not plug in while the power is connected, for 4 mm test plug and terminal blocks with 5.2 mm, 6.2 mm, and 8.2 mm pitch, color: red

Test adapter

Test adapter - PAIS-4-FIX BU - 3032798

<https://www.phoenixcontact.com/pc/products/3032798>



Test adapter, Touch proof against unintentional direct contact according to DIN EN 50274 when plugged in, for 4 mm test plug and terminal blocks with 5.2 mm, 6.2 mm, and 8.2 mm pitch, color: blue

Feed-through terminal block - PT 6

3211813

<https://www.phoenixcontact.com/pc/products/3211813>

Test adapter

Test adapter - PAIS-4-FIX YE - 3032799

<https://www.phoenixcontact.com/pc/products/3032799>



Test adapter, Touch proof against unintentional direct contact according to DIN EN 50274 when plugged in, for 4 mm test plug and terminal blocks with 5.2 mm, 6.2 mm, and 8.2 mm pitch, color: yellow

Test adapter

Test adapter - PAIS-4-FIX GN - 3032801

<https://www.phoenixcontact.com/pc/products/3032801>



Test adapter, Touch proof against unintentional direct contact according to DIN EN 50274 when plugged in, for 4 mm test plug and terminal blocks with 5.2 mm, 6.2 mm, and 8.2 mm pitch, color: green

Feed-through terminal block - PT 6

3211813

<https://www.phoenixcontact.com/pc/products/3211813>

Test adapter

Test adapter - PAIS-4-FIX VT - 3032802

<https://www.phoenixcontact.com/pc/products/3032802>



Test adapter, Touch proof against unintentional direct contact according to DIN EN 50274 when plugged in, for 4 mm test plug and terminal blocks with 5.2 mm, 6.2 mm, and 8.2 mm pitch, color: violet

Test plugs

Test plugs - PS-8 - 3031005

<https://www.phoenixcontact.com/pc/products/3031005>



Test plugs, Modular test plug, color: red

Feed-through terminal block - PT 6

3211813

<https://www.phoenixcontact.com/pc/products/3211813>

Spacer plate

Spacer plate - DP PS-8 - 3036741

<https://www.phoenixcontact.com/pc/products/3036741>



Spacer plate, length: 22.4 mm, width: 8.2 mm, height: 29 mm, number of positions: 1, color: red

Test plugs

Test plugs - PS-8/2,3MM RD - 3048564

<https://www.phoenixcontact.com/pc/products/3048564>



Test plugs, color: red

Feed-through terminal block - PT 6

3211813

<https://www.phoenixcontact.com/pc/products/3211813>

Software

Software - PROJECT COMPLETE - 1050453

<https://www.phoenixcontact.com/pc/products/1050453>

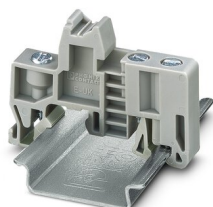


Intuitive planning and marking software for configuring terminal strips and for professional marking of marking materials for terminal blocks, conductors, cables, devices, and systems. The software is available for download

End clamp

End clamp - E/UK - 1201442

<https://www.phoenixcontact.com/pc/products/1201442>



End clamp, material: PA, color: gray, Mounting on a DIN rail NS 32 or NS 35

Feed-through terminal block - PT 6

3211813

<https://www.phoenixcontact.com/pc/products/3211813>

End clamp

End clamp - E/UK 1 - 1201413

<https://www.phoenixcontact.com/pc/products/1201413>



End clamps, for supporting the ends of double-level and three-level terminal blocks, width: 10 mm, color: gray

Marker for terminal blocks

Marker for terminal blocks - TMT (EX9,5)R - 0828295

<https://www.phoenixcontact.com/pc/products/0828295>



Marker for terminal blocks, Roll, white, unlabeled, can be labeled with: THERMOMARK E.300 (D)/600 (D), THERMOMARK ROLL 2.0, THERMOMARK ROLL, THERMOMARK ROLL X1, THERMOMARK ROLLMASTER 300/600, THERMOMARK X1.2, mounting type: snapped, snap into tall marker groove, lettering field size: 9.5 x 50000 mm, Number of individual labels: 1

Feed-through terminal block - PT 6

3211813

<https://www.phoenixcontact.com/pc/products/3211813>

Marker for terminal blocks

Marker for terminal blocks - US-TM 100 - 0829255

<https://www.phoenixcontact.com/pc/products/0829255>



Marker for terminal blocks, Card, white, unlabeled, can be labeled with: BLUEMARK ID COLOR, BLUEMARK ID, THERMOMARK PRIME, THERMOMARK CARD 2.0, THERMOMARK CARD, mounting type: snapped, lettering field size: 104 x 9.8 mm, Number of individual labels: 13

End clamp

End clamp - CLIPFIX 35 - 3022218

<https://www.phoenixcontact.com/pc/products/3022218>



Quick mounting end clamp for NS 35/7,5 DIN rail or NS 35/15 DIN rail, with marking option, width: 9.5 mm, color: gray

Feed-through terminal block - PT 6

3211813

<https://www.phoenixcontact.com/pc/products/3211813>

End clamp

End clamp - CLIPFIX 35-5 - 3022276

<https://www.phoenixcontact.com/pc/products/3022276>

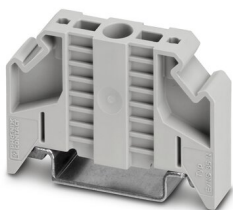


Quick mounting end clamp for NS 35/7,5 DIN rail or NS 35/15 DIN rail, with marking option, with parking option for FBS...5, FBS...6, KSS 5, KSS 6, width: 5.15 mm, color: gray

End clamp

End clamp - E/NS 35 N - 0800886

<https://www.phoenixcontact.com/pc/products/0800886>



End clamp, width: 9.5 mm, color: gray

Phoenix Contact 2023 © - all rights reserved
<https://www.phoenixcontact.com>

PHOENIX CONTACT GmbH & Co. KG
Flachsmarktstraße 8
D-32825 Blomberg
+49 (0) 5235-3 00
info@phoenixcontact.com