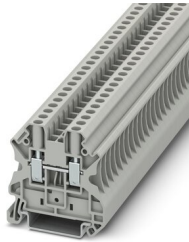


Feed-through terminal block - UT 4

3044102

<https://www.phoenixcontact.com/pc/products/3044102>

Please be informed that the data shown in this PDF document is generated from our Online Catalog. Please find the complete data in the user documentation. Our General Terms of Use for Downloads are valid.



Feed-through terminal block, nom. voltage: 1000 V, nominal current: 32 A, connection method: Screw connection, Rated cross section: 4 mm², cross section: 0.14 mm² - 6 mm², mounting type: NS 35/7,5, NS 35/15, color: gray

Your advantages

- The large wiring space enables the connection of solid and stranded conductors without ferrules, even above the nominal cross section
- As well as saving space, the compact design enables user-friendly wiring in a small amount of space
- Optimum screwdriver guidance through closed screw shafts
- The cable entry funnel enables the use of conductors with ferrules and plastic collars within the nominal cross section
- Tested for railway applications

Commercial Data

Item number	3044102
Packing unit	50 pc
Minimum order quantity	1 pc
Product Key	BE1111
Catalog Page	Page 159 (C-1-2019)
GTIN	4017918960391
Weight per Piece (including packing)	9.494 g
Weight per Piece (excluding packing)	8.9 g
Customs tariff number	85369010
Country of origin	DE

Feed-through terminal block - UT 4



3044102

<https://www.phoenixcontact.com/pc/products/3044102>

Technical Data

Product properties

Product type	Feed-through terminal block
Product family	UT
Area of application	Railway industry
	Machine building
	Plant engineering
	Process industry
Number of connections	2
Number of rows	1
Potentials	1

Insulation characteristics

Overvoltage category	III
Degree of pollution	3

Electrical properties

Rated surge voltage	8 kV
Maximum power dissipation for nominal condition	1.02 W

Connection data

Number of connections per level	2
Nominal cross section	4 mm ²

Level 1 above 1 below 1

Screw thread	M3
Tightening torque	0.6 ... 0.8 Nm
Stripping length	9 mm
Internal cylindrical gage	A4
Connection in acc. with standard	IEC 60947-7-1
Conductor cross section solid	0.14 mm ² ... 6 mm ²
Cross section AWG	26 ... 10 (converted acc. to IEC)
Conductor cross section flexible	0.14 mm ² ... 6 mm ²
Conductor cross section, flexible [AWG]	26 ... 10 (converted acc. to IEC)
Flexible conductor cross section flexible (ferrule, w/o plastic sleeve)	0.14 mm ² ... 4 mm ²
Flexible conductor cross section (ferrule with plastic sleeve)	0.14 mm ² ... 4 mm ²
2 conductors with same cross section, solid	0.14 mm ² ... 1.5 mm ²
2 conductors with same cross section, flexible	0.14 mm ² ... 1.5 mm ²
2 conductors with same cross section, flexible, with ferrule without plastic sleeve	0.14 mm ² ... 1.5 mm ²
2 conductors with the same cross section, flexible, with TWIN ferrule with plastic sleeve	0.5 mm ² ... 2.5 mm ²
Nominal current	32 A (with 4 mm ² conductor cross section)

Feed-through terminal block - UT 4



3044102

<https://www.phoenixcontact.com/pc/products/3044102>

Maximum load current	41 A (with 6 mm ² conductor cross section)
Nominal voltage	1000 V
Note	Note: Product releases, connection cross sections and notes on connecting aluminum cables can be found in the download area.
Nominal cross section	4 mm ²

Ex data

Rated data (ATEX/IECEX)

Identification	□ II 2 GD Ex eb IIC Gb
Operating temperature range	-60 °C ... 110 °C
Ex-certified accessories	3047028 D-UT 2,5/10 3047167 ATP-UT 1205053 SZS 0,6X3,5 3022276 CLIPFIX 35-5 3022218 CLIPFIX 35
List of bridges	Plug-in bridge / FBS 2-6 / 3030336 Plug-in bridge / FBS 3-6 / 3030242 Plug-in bridge / FBS 4-6 / 3030255 Plug-in bridge / FBS 5-6 / 3030349 Plug-in bridge / FBS 10-6 / 3030271 Plug-in bridge / FBS 20-6 / 3030365 Plug-in bridge / FBS 50-6 / 3032224
Bridge data	27 A / 4 mm ²
Ex temperature increase	40 K (33.3 A / 4 mm ²)
Rated voltage	690 V
for bridging with bridge	690 V
- At bridging between non-adjacent terminal blocks	352 V
- At bridging between non-adjacent terminal blocks via PE terminal block	275 V
- At cut-to-length bridging with cover	220 V
- At cut-to-length bridging with partition plate	275 V
Rated insulation voltage	630 V
output	(Permanent)

Ex level General

Rated current	30 A
Maximum load current	38 A
Contact resistance	0.26 mΩ

Ex connection data General

Torque range	0.6 Nm ... 0.8 Nm
Nominal cross section	4 mm ²
Rated cross section AWG	12
Connection capacity rigid	0.14 mm ² ... 6 mm ²
Connection capacity AWG	26 ... 10

Feed-through terminal block - UT 4

3044102

<https://www.phoenixcontact.com/pc/products/3044102>

Connection capacity flexible	0.14 mm ² ... 4 mm ²
Connection capacity AWG	26 ... 12
2 conductors with same cross section, solid	0.14 mm ² ... 1.5 mm ²
2 conductors with the same cross-section AWG rigid	26 ... 16
2 conductors with same cross section, stranded	0.14 mm ² ... 1.5 mm ²
2 conductors with the same cross-section AWG flexible	26 ... 16

Dimensions

Width	6.2 mm
End cover width	2.2 mm
Height	46.9 mm
Height NS 35/15	55 mm
Height NS 35/7,5	47.5 mm
Length	47.7 mm

Material specifications

Color	gray
Flammability rating according to UL 94	V0
Insulating material group	I
Insulating material	PA
Static insulating material application in cold	-60 °C
Temperature index of insulation material (DIN EN 60216-1 (VDE 0304-21))	125 °C
Relative insulation material temperature index (Elec., UL 746 B)	130 °C
Fire protection for rail vehicles (DIN EN 45545-2) R22	HL 1 - HL 3
Fire protection for rail vehicles (DIN EN 45545-2) R23	HL 1 - HL 3
Fire protection for rail vehicles (DIN EN 45545-2) R24	HL 1 - HL 3
Fire protection for rail vehicles (DIN EN 45545-2) R26	HL 1 - HL 3
Calorimetric heat release NFPA 130 (ASTM E 1354)	27,5 MJ/kg
Surface flammability NFPA 130 (ASTM E 162)	passed
Specific optical density of smoke NFPA 130 (ASTM E 662)	passed
Smoke gas toxicity NFPA 130 (SMP 800C)	passed

Electrical tests

Surge voltage test

Test voltage setpoint	9.8 kV
Result	Test passed

Temperature-rise test

Requirement temperature-rise test	Increase in temperature ≤ 45 K
Result	Test passed
Short-time withstand current 4 mm ²	0.48 kA
	0.72 kA
Result	Test passed

Feed-through terminal block - UT 4



3044102

<https://www.phoenixcontact.com/pc/products/3044102>

Power-frequency withstand voltage

Test voltage setpoint	2.2 kV
Result	Test passed

Mechanical properties

Mechanical data

Open side panel	Yes
-----------------	-----

Mechanical tests

Mechanical strength

Result	Test passed
--------	-------------

Attachment on the carrier

DIN rail/fixing support	NS 35
Test force setpoint	1 N
Result	Test passed

Test for conductor damage and slackening

Rotation speed	10 rpm
Revolutions	135
Conductor cross section/weight	0.14 mm ² / 0.2 kg
	4 mm ² / 0.9 kg
	6 mm ² / 1.4 kg
Result	Test passed

Environmental and real-life conditions

Needle-flame test

Time of exposure	30 s
Result	Test passed

Oscillation/broadband noise

Specification	DIN EN 50155 (VDE 0115-200):2008-03
Spectrum	Service life test category 1, class B, body mounted
Frequency	$f_1 = 5 \text{ Hz}$ to $f_2 = 150 \text{ Hz}$
ASD level	1.857 (m/s ²)/Hz
Acceleration	0.8g
Test duration per axis	5 h
Test directions	X-, Y- and Z-axis
Result	Test passed

Shocks

Specification	DIN EN 50155 (VDE 0115-200):2008-03
Pulse shape	Half-sine
Acceleration	5g

Feed-through terminal block - UT 4



3044102

<https://www.phoenixcontact.com/pc/products/3044102>

Shock duration	30 ms
Number of shocks per direction	3
Test directions	X-, Y- and Z-axis (pos. and neg.)
Result	Test passed

Ambient conditions

Ambient temperature (operation)	-60 °C ... 105 °C (max. short-term operating temperature RTI Elec.)
Ambient temperature (storage/transport)	-25 °C ... 60 °C (for a short time, not exceeding 24 h, -60 °C to +70 °C)
Ambient temperature (assembly)	-5 °C ... 70 °C
Ambient temperature (actuation)	-5 °C ... 70 °C
Permissible humidity (storage/transport)	30 % ... 70 %

Standards and regulations

Connection in acc. with standard	IEC 60947-7-1
----------------------------------	---------------

Mounting

Mounting type	NS 35/7,5
	NS 35/15

Feed-through terminal block - UT 4

3044102

<https://www.phoenixcontact.com/pc/products/3044102>



Drawings

Circuit diagram



Feed-through terminal block - UT 4



3044102

<https://www.phoenixcontact.com/pc/products/3044102>

Approvals

DNV

Approval ID: TAE00001S9



CSA

Approval ID: 13631

	Nominal Voltage U_N	Nominal Current I_N	Cross Section AWG	Cross Section mm^2
Use group B				
	600 V	30 A	26 - 10	-
Use group C				
	600 V	30 A	26 - 10	-



IECEE CB Scheme

Approval ID: DE1-63061_M1

	Nominal Voltage U_N	Nominal Current I_N	Cross Section AWG	Cross Section mm^2
	1000 V	32 A	-	0.2 - 4



EAC

Approval ID: RU C-DE.BL08.B.00534



cULus Recognized

Approval ID: E60425

	Nominal Voltage U_N	Nominal Current I_N	Cross Section AWG	Cross Section mm^2
Use group B				
Factory wiring	600 V	40 A	26 - 10	-
	600 V	30 A	26 - 10	-
Multi-conductor connection	600 V	30 A	26 - 14	-
Use group C				
Factory wiring	600 V	40 A	26 - 10	-
	600 V	30 A	26 - 10	-
Multi-conductor connection	600 V	30 A	26 - 14	-



LR

Approval ID: LR2003762TA



RS

Approval ID: 22.44.01.00083.250

Feed-through terminal block - UT 4



3044102

<https://www.phoenixcontact.com/pc/products/3044102>



VDE Zeichengenehmigung

Approval ID: 40013658

	Nominal Voltage U_N	Nominal Current I_N	Cross Section AWG	Cross Section mm^2
	1000 V	32 A	-	0.2 - 4



ATEX

Approval ID: KEMA04ATEX2048U



cUL Recognized

Approval ID: E192998

	Nominal Voltage U_N	Nominal Current I_N	Cross Section AWG	Cross Section mm^2
Use group B	600 V	30 A	26 - 10	-
Use group C	600 V	30 A	26 - 10	-



EAC Ex

Approval ID: RU C-DE.HA91.B.00066



IECEx

Approval ID: IECEx KEM 06.0027U



UL Recognized

Approval ID: E192998

	Nominal Voltage U_N	Nominal Current I_N	Cross Section AWG	Cross Section mm^2
Use group B	600 V	30 A	26 - 10	-
Use group C	600 V	30 A	26 - 10	-



CCC

Approval ID: 2020322313000622



NEPSI

Approval ID: GYJ20.1194U



UKCA-EX

Feed-through terminal block - UT 4



3044102

<https://www.phoenixcontact.com/pc/products/3044102>

Approval ID: DEKRA 21UKEX0304U

cULus Recognized

Feed-through terminal block - UT 4



3044102

<https://www.phoenixcontact.com/pc/products/3044102>

Classifications

ECLASS

ECLASS-9.0	27141120
ECLASS-10.0.1	27141120
ECLASS-11.0	27141120

ETIM

ETIM 8.0	EC000897
----------	----------

UNSPSC

UNSPSC 21.0	39121400
-------------	----------

Feed-through terminal block - UT 4



3044102

<https://www.phoenixcontact.com/pc/products/3044102>

Environmental Product Compliance

REACH SVHC	Lead 7439-92-1
China RoHS	Environmentally Friendly Use Period = 50 years
	For information on hazardous substances, refer to the manufacturer's declaration available under "Downloads"

Feed-through terminal block - UT 4

3044102

<https://www.phoenixcontact.com/pc/products/3044102>

Accessories

 Note: Applying some accessories below might limit this product.

Plug-in bridge

Plug-in bridge - FBS 2-6 - 3030336

<https://www.phoenixcontact.com/pc/products/3030336>



Plug-in bridge, pitch: 6.2 mm, number of positions: 2, color: red

 Max. current carrying capacity: 32 A

Plug-in bridge

Plug-in bridge - FBS 3-6 - 3030242

<https://www.phoenixcontact.com/pc/products/3030242>



Plug-in bridge, pitch: 6.2 mm, number of positions: 3, color: red

 Max. current carrying capacity: 32 A

Feed-through terminal block - UT 4

3044102

<https://www.phoenixcontact.com/pc/products/3044102>

Plug-in bridge

Plug-in bridge - FBS 4-6 - 3030255

<https://www.phoenixcontact.com/pc/products/3030255>



Plug-in bridge, pitch: 6.2 mm, number of positions: 4, color: red

 Max. current carrying capacity: 32 A

Plug-in bridge

Plug-in bridge - FBS 5-6 - 3030349

<https://www.phoenixcontact.com/pc/products/3030349>



Plug-in bridge, pitch: 6.2 mm, number of positions: 5, color: red

 Max. current carrying capacity: 32 A

Feed-through terminal block - UT 4

3044102

<https://www.phoenixcontact.com/pc/products/3044102>

Plug-in bridge

Plug-in bridge - FBS 6-6 - 1008238

<https://www.phoenixcontact.com/pc/products/1008238>



Plug-in bridge, One side not fully isolated, pitch: 6.2 mm, number of positions: 6, color: red

 Max. current carrying capacity: 32 A


Plug-in bridge

Plug-in bridge - FBS 10-6 - 3030271

<https://www.phoenixcontact.com/pc/products/3030271>



Plug-in bridge, pitch: 6.2 mm, number of positions: 10, color: red

 Max. current carrying capacity: 32 A

Feed-through terminal block - UT 4

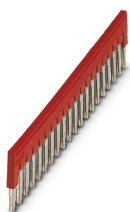
3044102

<https://www.phoenixcontact.com/pc/products/3044102>


Plug-in bridge

Plug-in bridge - FBS 20-6 - 3030365

<https://www.phoenixcontact.com/pc/products/3030365>



Plug-in bridge, pitch: 6.2 mm, number of positions: 20, color: red

 Max. current carrying capacity: 32 A


Plug-in bridge

Plug-in bridge - FBS 50-6 - 3032224

<https://www.phoenixcontact.com/pc/products/3032224>



Plug-in bridge, pitch: 6.2 mm, number of positions: 50, color: red

 Max. current carrying capacity: 32 A

Feed-through terminal block - UT 4

3044102

<https://www.phoenixcontact.com/pc/products/3044102>

Plug-in bridge

Plug-in bridge - FBSR 2-6 - 3033715

<https://www.phoenixcontact.com/pc/products/3033715>



Plug-in bridge, pitch: 6.2 mm, number of positions: 2, color: red

 Max. current carrying capacity: 24 A

Plug-in bridge

Plug-in bridge - FBSR 3-6 - 3001594

<https://www.phoenixcontact.com/pc/products/3001594>



Plug-in bridge, pitch: 6.2 mm, number of positions: 3, color: red

 Max. current carrying capacity: 24 A

Feed-through terminal block - UT 4

3044102

<https://www.phoenixcontact.com/pc/products/3044102>

Plug-in bridge

Plug-in bridge - FBSR 4-6 - 3001595

<https://www.phoenixcontact.com/pc/products/3001595>



Plug-in bridge, pitch: 6.2 mm, number of positions: 4, color: red

 Max. current carrying capacity: 24 A


Plug-in bridge

Plug-in bridge - FBSR 5-6 - 3001596

<https://www.phoenixcontact.com/pc/products/3001596>



Plug-in bridge, pitch: 6.2 mm, number of positions: 5, color: red

 Max. current carrying capacity: 24 A

Feed-through terminal block - UT 4

3044102

<https://www.phoenixcontact.com/pc/products/3044102>

Plug-in bridge

Plug-in bridge - FBSR 10-6 - 3033716

<https://www.phoenixcontact.com/pc/products/3033716>



Plug-in bridge, pitch: 6.2 mm, number of positions: 10, color: red

 Max. current carrying capacity: 24 A

Short-circuit connector

Short-circuit connector - FBSRH 2-6 - 3033812

<https://www.phoenixcontact.com/pc/products/3033812>



Short-circuit connector, pitch: 6.2 mm, number of positions: 2, color: red

 Max. current carrying capacity: 24 A

Feed-through terminal block - UT 4

3044102

<https://www.phoenixcontact.com/pc/products/3044102>

Plug-in bridge

Plug-in bridge - FBS 2-6 BU - 3036932

<https://www.phoenixcontact.com/pc/products/3036932>



Plug-in bridge, pitch: 6.2 mm, number of positions: 2, color: blue

 Max. current carrying capacity: 32 A

Plug-in bridge

Plug-in bridge - FBS 3-6 BU - 3036945

<https://www.phoenixcontact.com/pc/products/3036945>



Plug-in bridge, pitch: 6.2 mm, number of positions: 3, color: blue

 Max. current carrying capacity: 32 A

Feed-through terminal block - UT 4

3044102

<https://www.phoenixcontact.com/pc/products/3044102>

Plug-in bridge

Plug-in bridge - FBS 4-6 BU - 3036958

<https://www.phoenixcontact.com/pc/products/3036958>



Plug-in bridge, pitch: 6.2 mm, number of positions: 4, color: blue

 Max. current carrying capacity: 32 A

Plug-in bridge

Plug-in bridge - FBS 5-6 BU - 3036961

<https://www.phoenixcontact.com/pc/products/3036961>



Plug-in bridge, pitch: 6.2 mm, number of positions: 5, color: blue

 Max. current carrying capacity: 32 A

Feed-through terminal block - UT 4

3044102

<https://www.phoenixcontact.com/pc/products/3044102>

Plug-in bridge

Plug-in bridge - FBS 10-6 BU - 3032198

<https://www.phoenixcontact.com/pc/products/3032198>

Plug-in bridge, pitch: 6.2 mm, number of positions: 10, color: blue



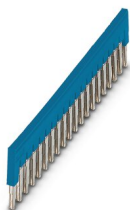
 Max. current carrying capacity: 32 A

Plug-in bridge

Plug-in bridge - FBS 20-6 BU - 3032208

<https://www.phoenixcontact.com/pc/products/3032208>

Plug-in bridge, pitch: 6.2 mm, number of positions: 20, color: blue



 Max. current carrying capacity: 32 A

Feed-through terminal block - UT 4

3044102

<https://www.phoenixcontact.com/pc/products/3044102>

Plug-in bridge

Plug-in bridge - FBS 50-6 BU - 3032211

<https://www.phoenixcontact.com/pc/products/3032211>



Plug-in bridge, pitch: 6.2 mm, number of positions: 50, color: blue

 Max. current carrying capacity: 32 A

Reducing bridge

Reducing bridge - RB ST 10-(2,5/4) - 3030873

<https://www.phoenixcontact.com/pc/products/3030873>



Reducing bridge, pitch: 10 mm, number of positions: 2, length: 36 mm, color: red

 Max. current carrying capacity: 35 A

Feed-through terminal block - UT 4

3044102

<https://www.phoenixcontact.com/pc/products/3044102>


Reducing bridge

Reducing bridge - RB UT 10-(2,5/4) - 3047060

<https://www.phoenixcontact.com/pc/products/3047060>



Reducing bridge, pitch: 10.2 mm, number of positions: 2, length: 29 mm, color: red

 Max. current carrying capacity: 40 A


Reducing bridge

Reducing bridge - RB UT 35-(2,5/4) - 3047277

<https://www.phoenixcontact.com/pc/products/3047277>



Reducing bridge, pitch: 11 mm, number of positions: 2, color: red

 Max. current carrying capacity: 40 A

Feed-through terminal block - UT 4

3044102

<https://www.phoenixcontact.com/pc/products/3044102>

Reducing bridge

Reducing bridge - RB UT 16-(2,5/4) - 3047073

<https://www.phoenixcontact.com/pc/products/3047073>



Reducing bridge, pitch: 11 mm, number of positions: 2, length: 31 mm, color: red

 Max. current carrying capacity: 40 A


Reducing bridge

Reducing bridge - RB UT 6-(2,5/4) - 3047251

<https://www.phoenixcontact.com/pc/products/3047251>



Reducing bridge, pitch: 9.5 mm, number of positions: 2, length: 25 mm, color: red

 Max. current carrying capacity: 40 A

Feed-through terminal block - UT 4

3044102

<https://www.phoenixcontact.com/pc/products/3044102>

End cover

End cover - D-UT 2,5/10 - 3047028

<https://www.phoenixcontact.com/pc/products/3047028>

End cover, length: 47 mm, width: 2.2 mm, height: 39.8 mm, color: gray



Partition plate

Partition plate - ATP-UT - 3047167

<https://www.phoenixcontact.com/pc/products/3047167>

Partition plate, length: 53.4 mm, width: 2.2 mm, height: 45.7 mm, color: gray



Feed-through terminal block - UT 4

3044102

<https://www.phoenixcontact.com/pc/products/3044102>

Screwdriver

Screwdriver - SZS 0,6X3,5 - 1205053

<https://www.phoenixcontact.com/pc/products/1205053>



Actuation tool, for ST terminal blocks, insulated, also suitable for use as a bladed screwdriver, size: 0.6 x 3.5 x 100 mm, 2-component grip, with non-slip grip

Marker pen

Marker pen - X-PEN 0,35 - 0811228

<https://www.phoenixcontact.com/pc/products/0811228>



Marker pen without ink cartridge, for manual labeling of markers, labeling extremely wipe-proof, line thickness 0.35 mm

Feed-through terminal block - UT 4

3044102

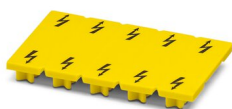
<https://www.phoenixcontact.com/pc/products/3044102>

Warning label

Warning label - WS UT 4 - 3047332

<https://www.phoenixcontact.com/pc/products/3047332>

Warning sign for UT terminal blocks



Screwdriver

Screwdriver - SF-SL 0,6X3,5-100 S-VDE - 1212587

<https://www.phoenixcontact.com/pc/products/1212587>



Actuation tool, for ST terminal blocks, VDE insulated, with slimmer insulation integrated in the blade, also suitable for use as a bladed screwdriver, size: 0.6 x 3.5 x 100 mm, 2-component grip, with non-slip grip

Feed-through terminal block - UT 4

3044102

<https://www.phoenixcontact.com/pc/products/3044102>

DIN rail perforated

DIN rail perforated - NS 35/ 7,5 PERF 2000MM - 0801733

<https://www.phoenixcontact.com/pc/products/0801733>



DIN rail perforated, acc. to EN 60715, material: Steel, galvanized, passivated with a thick layer, Standard profile, color: silver, Pack of 25 (50 m)

DIN rail, unperforated

DIN rail, unperforated - NS 35/ 7,5 UNPERF 2000MM - 0801681

<https://www.phoenixcontact.com/pc/products/0801681>



DIN rail, unperforated, acc. to EN 60715, material: Steel, galvanized, passivated with a thick layer, Standard profile, color: silver, Pack of 25 (50 m)

Feed-through terminal block - UT 4

3044102

<https://www.phoenixcontact.com/pc/products/3044102>

DIN rail perforated

DIN rail perforated - NS 35/ 7,5 WH PERF 2000MM - 1204119

<https://www.phoenixcontact.com/pc/products/1204119>



DIN rail perforated, acc. to EN 60715, material: Steel, Galvanized, white passivated, Standard profile, color: silver, Pack of 25 (50 m)

DIN rail, unperforated

DIN rail, unperforated - NS 35/ 7,5 WH UNPERF 2000MM-VPE 10 - 1204122

<https://www.phoenixcontact.com/pc/products/1204122>



DIN rail, unperforated, acc. to EN 60715, material: Steel, Galvanized, white passivated, Standard profile, color: silver, Pack of 10 (20 m)

Feed-through terminal block - UT 4

3044102

<https://www.phoenixcontact.com/pc/products/3044102>

DIN rail, unperforated

DIN rail, unperforated - NS 35/ 7,5 AL UNPERF 2000MM - 0801704

<https://www.phoenixcontact.com/pc/products/0801704>



DIN rail, unperforated, acc. to EN 60715, material: Aluminum, uncoated, Standard profile, color: silver, Pack of 25 (50 m)

DIN rail perforated

DIN rail perforated - NS 35/ 7,5 ZN PERF 2000MM - 1206421

<https://www.phoenixcontact.com/pc/products/1206421>



DIN rail perforated, acc. to EN 60715, material: Steel, galvanized, Standard profile, color: silver, Pack of 25 (50 m)

Feed-through terminal block - UT 4

3044102

<https://www.phoenixcontact.com/pc/products/3044102>

DIN rail, unperforated

DIN rail, unperforated - NS 35/ 7,5 ZN UNPERF 2000MM - 1206434

<https://www.phoenixcontact.com/pc/products/1206434>



DIN rail, unperforated, acc. to EN 60715, material: Steel, galvanized, Standard profile, color: silver, Pack of 25 (50 m)

DIN rail, unperforated

DIN rail, unperforated - NS 35/ 7,5 CU UNPERF 2000MM-VPE 10 - 0801762

<https://www.phoenixcontact.com/pc/products/0801762>



DIN rail, unperforated, acc. to EN 60715, material: Copper, uncoated, Standard profile, color: copper-colored, Pack of 10 (20 m)

Feed-through terminal block - UT 4

3044102

<https://www.phoenixcontact.com/pc/products/3044102>

End cap

End cap - NS 35/ 7,5 CAP - 1206560

<https://www.phoenixcontact.com/pc/products/1206560>

DIN rail end piece, for DIN rail NS 35/7.5



DIN rail perforated

DIN rail perforated - NS 35/15 PERF 2000MM - 1201730

<https://www.phoenixcontact.com/pc/products/1201730>



DIN rail perforated, similar to EN 60715, material: Steel, galvanized, passivated with a thick layer, Standard profile, color: silver, Pack of 25 (50 m)

Feed-through terminal block - UT 4

3044102

<https://www.phoenixcontact.com/pc/products/3044102>

DIN rail, unperforated

DIN rail, unperforated - NS 35/15 UNPERF 2000MM - 1201714

<https://www.phoenixcontact.com/pc/products/1201714>



DIN rail, unperforated, similar to EN 60715, material: Steel, galvanized, passivated with a thick layer, Standard profile, color: silver, Pack of 25 (50 m)

DIN rail perforated

DIN rail perforated - NS 35/15 WH PERF 2000MM - 0806602

<https://www.phoenixcontact.com/pc/products/0806602>



DIN rail perforated, similar to EN 60715, material: Steel, Galvanized, white passivated, Standard profile, color: white, Pack of 25 (50 m)

Feed-through terminal block - UT 4

3044102

<https://www.phoenixcontact.com/pc/products/3044102>

DIN rail, unperforated

DIN rail, unperforated - NS 35/15 WH UNPERF 2000MM-VPE 10 - 1204135

<https://www.phoenixcontact.com/pc/products/1204135>



DIN rail, unperforated, similar to EN 60715, material: Steel, Galvanized, white passivated, Standard profile, color: silver, Pack of 10 (20 m)

DIN rail, unperforated

DIN rail, unperforated - NS 35/15 AL UNPERF 2000MM - 1201756

<https://www.phoenixcontact.com/pc/products/1201756>



DIN rail, unperforated, similar to EN 60715, material: Aluminum, uncoated, Standard profile, color: silver

Feed-through terminal block - UT 4

3044102

<https://www.phoenixcontact.com/pc/products/3044102>

DIN rail perforated

DIN rail perforated - NS 35/15 ZN PERF 2000MM - 1206599

<https://www.phoenixcontact.com/pc/products/1206599>



DIN rail perforated, similar to EN 60715, material: Steel, galvanized, Standard profile, color: silver, Pack of 25 (50 m)

DIN rail, unperforated

DIN rail, unperforated - NS 35/15 ZN UNPERF 2000MM - 1206586

<https://www.phoenixcontact.com/pc/products/1206586>



DIN rail, unperforated, similar to EN 60715, material: Steel, galvanized, Standard profile, color: silver, Pack of 25 (50 m)

Feed-through terminal block - UT 4

3044102

<https://www.phoenixcontact.com/pc/products/3044102>

DIN rail, unperforated

DIN rail, unperforated - NS 35/15 CU UNPERF 2000MM-VPE 10 - 1201895

<https://www.phoenixcontact.com/pc/products/1201895>



DIN rail, unperforated, similar to EN 60715, material: Copper, uncoated, Standard profile, color: copper-colored, Pack of 10 (20 m)

End cap

End cap - NS 35/15 CAP - 1206573

<https://www.phoenixcontact.com/pc/products/1206573>

DIN rail end piece, for DIN rail NS 35/15



Feed-through terminal block - UT 4

3044102

<https://www.phoenixcontact.com/pc/products/3044102>

DIN rail, unperforated

DIN rail, unperforated - NS 35/15-2,3 UNPERF 2000MM-VPE 10 - 1201798

<https://www.phoenixcontact.com/pc/products/1201798>



DIN rail, unperforated, acc. to EN 60715, material: Steel, galvanized, passivated with a thick layer, Standard profile 2.3 mm, color: silver, Pack of 10 (20 m)

Zack marker strip

Zack marker strip - ZB 6:UNBEDRUCKT - 1051003

<https://www.phoenixcontact.com/pc/products/1051003>



Zack marker strip, Strip, white, unlabeled, can be labeled with: PLOTMARK, CMS-P1-PLOTTER, mounting type: snapped, for terminal block width: 6.2 mm, lettering field size: 6.15 x 10.5 mm, Number of individual labels: 10

Feed-through terminal block - UT 4

3044102

<https://www.phoenixcontact.com/pc/products/3044102>

Zack marker strip

Zack marker strip - ZB 6 CUS - 0824992

<https://www.phoenixcontact.com/pc/products/0824992>



Zack marker strip, can be ordered: Strip, white, labeled according to customer specifications, mounting type: snap into tall marker groove, for terminal block width: 6.2 mm, lettering field size: 6.15 x 10.5 mm, Number of individual labels: 10

Zack marker strip

Zack marker strip - ZB 6,LGS:FORTL.ZAHLEN - 1051016

<https://www.phoenixcontact.com/pc/products/1051016>



Zack marker strip, Strip, white, labeled, can be labeled with: CMS-P1-PLOTTER, printed horizontally: consecutive numbers 1 ... 10, 11 ... 20, etc. up to 491 ... 500, mounting type: snapped, for terminal block width: 6.2 mm, lettering field size: 6.15 x 10.5 mm, Number of individual labels: 10

Feed-through terminal block - UT 4

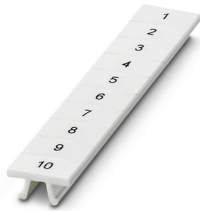
3044102

<https://www.phoenixcontact.com/pc/products/3044102>

Zack marker strip

Zack marker strip - ZB 6,QR:FORTL.ZAHLEN - 1051029

<https://www.phoenixcontact.com/pc/products/1051029>



Zack marker strip, Strip, white, labeled, can be labeled with: CMS-P1-PLOTTER, Printed vertically: consecutive numbers 1 ... 10, 11 ... 20, etc. up to 491 ... 500, mounting type: snapped, for terminal block width: 6.2 mm, lettering field size: 6.15 x 10.5 mm, Number of individual labels: 10

Zack marker strip

Zack marker strip - ZB 6,LGS:GLEICHE ZAHLEN - 1051032

<https://www.phoenixcontact.com/pc/products/1051032>



Zack marker strip, Strip, white, labeled, can be labeled with: CMS-P1-PLOTTER, printed horizontally: Identical numbers 1 or 2, etc. up to 100, mounting type: snapped, for terminal block width: 6.2 mm, lettering field size: 6.15 x 10.5 mm, Number of individual labels: 10

Feed-through terminal block - UT 4

3044102

<https://www.phoenixcontact.com/pc/products/3044102>

Marker for terminal blocks

Marker for terminal blocks - ZB 6,LGS:L1-N,PE - 1051414

<https://www.phoenixcontact.com/pc/products/1051414>



Marker for terminal blocks, Strip, white, labeled, can be labeled with: CMS-P1-PLOTTER, horizontal: L1, L2, L3, N, PE, L1, L2, L3, N, PE, mounting type: snapped, for terminal block width: 6.2 mm, lettering field size: 6.15 x 10.5 mm, Number of individual labels: 10

Marker for terminal blocks

Marker for terminal blocks - ZB 6,LGS:U-N - 1051430

<https://www.phoenixcontact.com/pc/products/1051430>



Marker for terminal blocks, Strip, white, labeled, can be labeled with: CMS-P1-PLOTTER, printed horizontally: U, V, W, N, GND, U, V, W, N, GND, mounting type: snapped, for terminal block width: 6.2 mm, lettering field size: 6.15 x 10.5 mm, Number of individual labels: 10

Feed-through terminal block - UT 4

3044102

<https://www.phoenixcontact.com/pc/products/3044102>

Marker for terminal blocks

Marker for terminal blocks - UC-TM 6 - 0818085

<https://www.phoenixcontact.com/pc/products/0818085>



Marker for terminal blocks, Sheet, white, unlabeled, can be labeled with: BLUEMARK ID COLOR, BLUEMARK ID, BLUEMARK CLED, PLOTMARK, CMS-P1-PLOTTER, mounting type: snapped, for terminal block width: 6.2 mm, lettering field size: 5.6 x 10.5 mm, Number of individual labels: 80

Marker for terminal blocks

Marker for terminal blocks - UC-TM 6 CUS - 0824589

<https://www.phoenixcontact.com/pc/products/0824589>



Marker for terminal blocks, can be ordered: by sheet, white, labeled according to customer specifications, mounting type: snap into tall marker groove, for terminal block width: 6.2 mm, lettering field size: 5.6 x 10.5 mm, Number of individual labels: 80

Feed-through terminal block - UT 4

3044102

<https://www.phoenixcontact.com/pc/products/3044102>

Marker for terminal blocks

Marker for terminal blocks - UCT-TM 6 - 0828736

<https://www.phoenixcontact.com/pc/products/0828736>



Marker for terminal blocks, Sheet, white, unlabeled, can be labeled with: TOPMARK NEO, TOPMARK LASER, BLUEMARK ID COLOR, BLUEMARK ID, BLUEMARK CLED, THERMOMARK PRIME, THERMOMARK CARD 2.0, THERMOMARK CARD, mounting type: snapped, for terminal block width: 6.2 mm, lettering field size: 5.6 x 10.5 mm, Number of individual labels: 60

Marker for terminal blocks

Marker for terminal blocks - UCT-TM 6 CUS - 0829602

<https://www.phoenixcontact.com/pc/products/0829602>



Marker for terminal blocks, can be ordered: by sheet, white, labeled according to customer specifications, mounting type: snap into tall marker groove, for terminal block width: 6.2 mm, lettering field size: 5.6 x 10.5 mm, Number of individual labels: 60

Feed-through terminal block - UT 4

3044102

<https://www.phoenixcontact.com/pc/products/3044102>

Test plugs

Test plugs - MPS-MT - 0201744

<https://www.phoenixcontact.com/pc/products/0201744>



Test plugs, with solder connection up to 1 mm² conductor cross section, color: gray

Insulating sleeve

Insulating sleeve - MPS-IH WH - 0201663

<https://www.phoenixcontact.com/pc/products/0201663>



Insulating sleeve, color: white

Feed-through terminal block - UT 4

3044102

<https://www.phoenixcontact.com/pc/products/3044102>

Insulating sleeve

Insulating sleeve - MPS-IH RD - 0201676

<https://www.phoenixcontact.com/pc/products/0201676>

Insulating sleeve, color: red

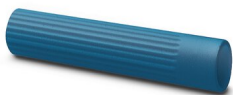


Insulating sleeve

Insulating sleeve - MPS-IH BU - 0201689

<https://www.phoenixcontact.com/pc/products/0201689>

Insulating sleeve, color: blue



Feed-through terminal block - UT 4

3044102

<https://www.phoenixcontact.com/pc/products/3044102>

Insulating sleeve

Insulating sleeve - MPS-IH YE - 0201692

<https://www.phoenixcontact.com/pc/products/0201692>

Insulating sleeve, color: yellow



Insulating sleeve

Insulating sleeve - MPS-IH GN - 0201702

<https://www.phoenixcontact.com/pc/products/0201702>

Insulating sleeve, color: green



Feed-through terminal block - UT 4

3044102

<https://www.phoenixcontact.com/pc/products/3044102>

Insulating sleeve

Insulating sleeve - MPS-IH GY - 0201728

<https://www.phoenixcontact.com/pc/products/0201728>

Insulating sleeve, color: gray



Insulating sleeve

Insulating sleeve - MPS-IH BK - 0201731

<https://www.phoenixcontact.com/pc/products/0201731>

Insulating sleeve, color: black



Feed-through terminal block - UT 4

3044102

<https://www.phoenixcontact.com/pc/products/3044102>

Test adapter

Test adapter - PAI-4-FIX-5/6 BU - 3035975

<https://www.phoenixcontact.com/pc/products/3035975>



4 mm test adapter, for terminal blocks with 5.2 mm and 6.2 mm pitch

Test adapter

Test adapter - PAI-4-FIX-5/6 OG - 3035974

<https://www.phoenixcontact.com/pc/products/3035974>



4 mm test adapter, for terminal blocks with 5.2 mm and 6.2 mm pitch

Feed-through terminal block - UT 4

3044102

<https://www.phoenixcontact.com/pc/products/3044102>

Test adapter

Test adapter - PAI-4-FIX-5/6 YE - 3035977

<https://www.phoenixcontact.com/pc/products/3035977>



4 mm test adapter, for terminal blocks with 5.2 mm and 6.2 mm pitch

Test adapter

Test adapter - PAI-4-FIX-5/6 RD - 3035976

<https://www.phoenixcontact.com/pc/products/3035976>



4 mm test adapter, for terminal blocks with 5.2 mm and 6.2 mm pitch

Feed-through terminal block - UT 4

3044102

<https://www.phoenixcontact.com/pc/products/3044102>

Test adapter

Test adapter - PAI-4-FIX-5/6 GN - 3035978

<https://www.phoenixcontact.com/pc/products/3035978>



4 mm test adapter, for terminal blocks with 5.2 mm and 6.2 mm pitch

Test adapter

Test adapter - PAI-4-FIX-5/6 BK - 3035980

<https://www.phoenixcontact.com/pc/products/3035980>



4 mm test adapter, for terminal blocks with 5.2 mm and 6.2 mm pitch

Feed-through terminal block - UT 4

3044102

<https://www.phoenixcontact.com/pc/products/3044102>

Test adapter

Test adapter - PAI-4-FIX-5/6 GY - 3035982

<https://www.phoenixcontact.com/pc/products/3035982>



4 mm test adapter, for terminal blocks with 5.2 mm and 6.2 mm pitch

Test adapter

Test adapter - PAI-4-FIX-5/6 VT - 3035979

<https://www.phoenixcontact.com/pc/products/3035979>



4 mm test adapter, for terminal blocks with 5.2 mm and 6.2 mm pitch

Feed-through terminal block - UT 4

3044102

<https://www.phoenixcontact.com/pc/products/3044102>

Test adapter

Test adapter - PAI-4-FIX-5/6 BN - 3035981

<https://www.phoenixcontact.com/pc/products/3035981>



4 mm test adapter, for terminal blocks with 5.2 mm and 6.2 mm pitch

Test adapter

Test adapter - PAI-4-FIX-5/6 WH - 3035983

<https://www.phoenixcontact.com/pc/products/3035983>



4 mm test adapter, for terminal blocks with 5.2 mm and 6.2 mm pitch

Feed-through terminal block - UT 4

3044102

<https://www.phoenixcontact.com/pc/products/3044102>

Test plugs

Test plugs - PS-6 - 3030996

<https://www.phoenixcontact.com/pc/products/3030996>



Test plugs, Modular test plug, color: red

Test plugs

Test plugs - PS-6/2,3MM RD - 3038736

<https://www.phoenixcontact.com/pc/products/3038736>



Test plugs, color: red

Feed-through terminal block - UT 4

3044102

<https://www.phoenixcontact.com/pc/products/3044102>

Software

Software - PROJECT COMPLETE - 1050453

<https://www.phoenixcontact.com/pc/products/1050453>



Intuitive planning and marking software for configuring terminal strips and for professional marking of marking materials for terminal blocks, conductors, cables, devices, and systems. The software is available for download

End clamp

End clamp - CLIPFIX 35 - 3022218

<https://www.phoenixcontact.com/pc/products/3022218>



Quick mounting end clamp for NS 35/7,5 DIN rail or NS 35/15 DIN rail, with marking option, width: 9.5 mm, color: gray

Feed-through terminal block - UT 4

3044102

<https://www.phoenixcontact.com/pc/products/3044102>

End clamp

End clamp - CLIPFIX 35-5 - 3022276

<https://www.phoenixcontact.com/pc/products/3022276>

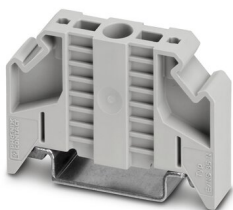


Quick mounting end clamp for NS 35/7,5 DIN rail or NS 35/15 DIN rail, with marking option, with parking option for FBS...5, FBS...6, KSS 5, KSS 6, width: 5.15 mm, color: gray

End clamp

End clamp - E/NS 35 N - 0800886

<https://www.phoenixcontact.com/pc/products/0800886>



End clamp, width: 9.5 mm, color: gray

Feed-through terminal block - UT 4

3044102

<https://www.phoenixcontact.com/pc/products/3044102>

Test adapter

Test adapter - PAI-4-N GY - 3032871

<https://www.phoenixcontact.com/pc/products/3032871>



4 mm test adapter, for terminal blocks with 5.2 mm, 6.2 mm and 8.2 mm pitch

Phoenix Contact 2023 © - all rights reserved

<https://www.phoenixcontact.com>

PHOENIX CONTACT GmbH & Co. KG

Flachsmarktstraße 8

D-32825 Blomberg

+49 (0) 5235-3 00

info@phoenixcontact.com