

FL SWITCH 1008N - Industrial Ethernet Switch



1085256

<https://www.phoenixcontact.com/fr/produits/1085256>

Please be informed that the data shown in this PDF document is generated from our Online Catalog. Please find the complete data in the user documentation. Our General Terms of Use for Downloads are valid.



Narrow Ethernet switch, eight RJ45 ports with 10/100 Mbps on all ports, automatic data transmission speed detection, autocrossing function, and QoS

Your advantages

- RJ45 ports support a transmission speed of 10/100 Mbps
- QoS-prioritized (Quality of Service) messages
- Local diagnostic indicators with LEDs
- PROFINET PTCP filter for reliable communication on PROFINET networks
- Enhanced traffic prioritization for automation protocols
- Energy-efficient Ethernet in accord. with IEEE 802.3az
- PROFINET Conformance Class A for real-time data exchange
- Auto negotiation and autocrossing detection simplifies installation and setup

Commercial Data

| | |
|--------------------------------------|---------------|
| Item number | 1085256 |
| Packing unit | 1 pc |
| Minimum order quantity | 1 pc |
| Sales Key | DNN116 |
| Product Key | DNN116 |
| GTIN | 4055626833590 |
| Weight per Piece (including packing) | 257 g |
| Weight per Piece (excluding packing) | 174 g |
| Customs tariff number | 85176200 |
| Country of origin | TW |

FL SWITCH 1008N - Industrial Ethernet Switch



1085256

<https://www.phoenixcontact.com/fr/produits/1085256>

Technical Data

Dimensions

| | |
|--------|----------|
| Width | 22.5 mm |
| Height | 140.4 mm |
| Depth | 92.4 mm |

Notes

Utilization restriction

| | |
|----------|---------------------------------------------------------------------------|
| EMC note | EMC: class A product, see manufacturer's declaration in the download area |
|----------|---------------------------------------------------------------------------|

Material specifications

| | |
|------------------|--------------------------------|
| Housing material | Polycarbonate fiber reinforced |
| | Polycarbonate fiber reinforced |

Mounting

| | |
|---------------|-------------------|
| Mounting type | DIN rail mounting |
|---------------|-------------------|

Interfaces

Ethernet (RJ45)

| | |
|-------------------------------|-----------------------------------|
| Number of interfaces | 8 |
| Connection method | RJ45 |
| Note on the connection method | Auto negotiation and autocrossing |
| Transmission speed | 10/100 Mbps |
| Transmission physics | Ethernet in RJ45 twisted pair |
| Transmission length | 100 m (per segment) |
| Signal LEDs | Data receive, link status |
| No. of channels | 8 (RJ45 ports) |

Product properties

| | |
|----------------|-------------------------------------------------------------------------------------------------------|
| Product type | Switch |
| Product family | Unmanaged Switch 1000 |
| MTTF | 133.9 Years (MIL-HDBK-217F standard, temperature 25°C, operating cycle 100%) |
| | 1254 Years (SN 29500 standard, temperature 25°C, operating cycle 21%) |
| | 1196 Years (Telcordia standard, 25°C temperature, 21% operating cycle (5 days a week, 8 hours a day)) |

Switch functions

| | |
|-----------------|----------------------------------|
| Basic functions | Unmanaged switch |
| | Autonegotiation |
| | Store and Forward switching mode |

FL SWITCH 1008N - Industrial Ethernet Switch



1085256

<https://www.phoenixcontact.com/fr/produits/1085256>

| | |
|----------------------------------|-------------------------------------------------------|
| PROFINET conformance class | Conformance-Class A |
| MAC address table | 2k |
| Status and diagnostic indicators | LEDs: U _S , link and activity per port |
| Additional functions | 100 BASE-TX/100BASE-FX (IEEE 802.3u) |
| | Quality of Service (QoS) prioritization (IEEE 802.1p) |
| | Energy-efficient Ethernet (IEEE 802.3az) |
| | 10Base-T (IEEE 802.3) |

Security functions

| | |
|-----------------|----------------------------------|
| Basic functions | Unmanaged switch |
| | Autonegotiation |
| | Store and Forward switching mode |

Electrical properties

| | |
|---------------------|--------|
| Transmission medium | Copper |
|---------------------|--------|

Supply

| | |
|-----------------------------|----------------------------------------------------------------|
| Supply voltage (DC) | 24 V |
| Supply voltage (AC) | 24 V AC (50/60 Hz) |
| Supply voltage range | 9 V DC ... 32 V DC |
| | 18 V AC ... 30 V AC (50/60 Hz) |
| Power supply connection | Via COMBICON, max. conductor cross section 2.5 mm ² |
| Residual ripple | 3.6 V _{PP} (within the permitted voltage range) |
| Max. current consumption | 173 mA (at 9 V DC) |
| Typical current consumption | 28 mA (at 24 V DC) |

Connection data

Connection technology

| | |
|-----------------|--------------|
| Connection name | Power supply |
| pluggable | yes |

Power supply

| | |
|-----------------------------------------------------------------------|----------------------------------------------|
| Connection method | Push-in spring connection |
| Conductor cross section, rigid | 0.2 mm ² ... 2.5 mm ² |
| Conductor cross section, flexible | 0.2 mm ² ... 2.5 mm ² |
| Conductor cross section AWG | 24 ... 12 |
| Conductor cross section, flexible, with ferrule, with plastic sleeve | 0.25 mm ² ... 2.5 mm ² |
| Conductor cross section flexible, with ferrule without plastic sleeve | 0.25 mm ² ... 2.5 mm ² |
| Stripping length | 10 mm |

Environmental and real-life conditions

Ambient conditions

| | |
|---------------------------------|------------------|
| Degree of protection | IP30 |
| Ambient temperature (operation) | -10 °C ... 60 °C |

FL SWITCH 1008N - Industrial Ethernet Switch



1085256

<https://www.phoenixcontact.com/fr/produits/1085256>

| | |
|------------------------------------------|-------------------------------------------------------------------------|
| Ambient temperature (storage/transport) | -40 °C ... 85 °C |
| Altitude | 2000 m (maximum) |
| Permissible humidity (operation) | 5 % ... 95 % (non-condensing) |
| Permissible humidity (storage/transport) | 5 % ... 95 % (non-condensing) |
| Shock (operation) | 30g (EN 60068-2-27) |
| Vibration (operation) | in acc. with IEC 60068-2-6: 5g, 150 Hz |
| Air pressure (operation) | 79 kPa ... 108 kPa up to 2000 m above mean sea level (Without derating) |
| Air pressure (storage/transport) | 79 kPa ... 108 kPa up to 2000 m above mean sea level (Without derating) |

EMC data

| | |
|---------------------------------|----------------------------------------------------------------|
| Conformance with EMC directives | EN 61000-6-2 EN 61000-4-2 (ESD) Criterion B |
| | EN 61000-6-2 EN 61000-4-3 (electromagnetic fields) Criterion A |
| | EN 61000-6-2 EN 61000-4-4 (EFT burst) Criterion A |
| | EN 61000-6-2 EN 61000-4-5 (surge) Criterion B |
| | EN 61000-6-2 EN 61000-4-6 (line noise immunity) Criterion A |
| | EN 61000-6-2 EN 61000-4-8 (electromagnetic fields) Criterion A |
| | EN 61000-6-2 Class A |
| Noise immunity | EN 61000-6-2:2005 |
| Electromagnetic compatibility | Conformance with EMC Directive 2014/30/EU |
| Noise emission | EN 61000-6-4:2007 + A1:2011 |

System properties

Functionality

| | |
|-----------------|----------------------------------|
| Basic functions | Unmanaged switch |
| | Autonegotiation |
| | Store and Forward switching mode |

Signaling

| | |
|----------------|---------------------------------------------------|
| Status display | LEDs: U _S , link and activity per port |
|----------------|---------------------------------------------------|

FL SWITCH 1008N - Industrial Ethernet Switch



1085256

<https://www.phoenixcontact.com/fr/produits/1085256>

Approvals

To download certificates, visit the product detail page: <https://www.phoenixcontact.com/fr/produits/1085256>



IECEE CB Scheme

Approval ID: DK-91138-UL



EAC

Approval ID: RU *-DE.A*08.B.00731



IECEE CB Scheme

Approval ID: DK-91246-UL



UL Listed

Approval ID: FILE E 140403



cUL Listed

Approval ID: FILE E 140403



KC

Approval ID: R-R-PCK-1085256



cUL Listed

Approval ID: FILE E 238705



UL Listed

Approval ID: FILE E 238705



CC-Link IE Field

Approval ID: NRT-IT-00068



cUL Listed

Approval ID: FILE E 196811



UL Listed

Approval ID: FILE E 196811

FL SWITCH 1008N - Industrial Ethernet Switch



1085256

<https://www.phoenixcontact.com/fr/produits/1085256>

Classifications

ECLASS

| | |
|-------------|----------|
| ECLASS-11.0 | 19170402 |
| ECLASS-12.0 | 19170402 |
| ECLASS-13.0 | 19170402 |

ETIM

| | |
|----------|----------|
| ETIM 8.0 | EC000734 |
|----------|----------|

UNSPSC

| | |
|-------------|----------|
| UNSPSC 21.0 | 43222600 |
|-------------|----------|

FL SWITCH 1008N - Industrial Ethernet Switch



1085256

<https://www.phoenixcontact.com/fr/produits/1085256>

Environmental Product Compliance

REACH SVHC

Lead 7439-92-1

1085256

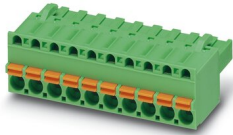
<https://www.phoenixcontact.com/fr/produits/1085256>

Accessories

FKCT 2,5/ 3-ST KMGY BD:US,GND - PCB connector

1087544

<https://www.phoenixcontact.com/fr/produits/1087544>

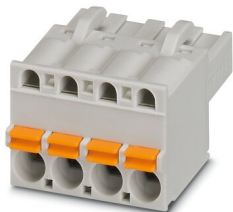


PCB connector, nominal cross section: 2.5 mm², color: light grey, nominal current: 12 A, rated voltage (III/2): 320 V, contact surface: Tin, type of contact: Socket, number of rows: 1, number of positions: 3, product range: FKCT 2,5/..-ST, pitch: 5 mm, connection method: Push-in spring connection, conductor/PCB connection direction: 0 °, locking clip: - Locking clip, plug-in system: COMBICON MSTB 2,5, locking: without, mounting: without, type of packaging: packed in cardboard

FKCT 2,5/ 3-ST KMGY - PCB connector

1998263

<https://www.phoenixcontact.com/fr/produits/1998263>



PCB connector, nominal cross section: 2.5 mm², color: light grey, nominal current: 12 A, rated voltage (III/2): 320 V, contact surface: Tin, type of contact: Socket, number of potentials: 3, number of rows: 1, number of positions: 3, number of connections: 3, product range: FKCT 2,5/..-ST, pitch: 5 mm, connection method: Push-in spring connection, conductor/PCB connection direction: 0 °, locking clip: - Locking clip, plug-in system: COMBICON MSTB 2,5, locking: without, mounting: without, type of packaging: packed in cardboard

FL SWITCH 1008N - Industrial Ethernet Switch



1085256

<https://www.phoenixcontact.com/fr/produits/1085256>

FL DIN-RAIL ADAPTER 22.5 - Mounting plate

1085485

<https://www.phoenixcontact.com/fr/produits/1085485>



The FL DIN-RAIL ADAPTER 22.5 is designed to allow products 22.5 mm wide to be mounted flush to a standard 35 mm DIN rail, in any orientation.

FL PANEL ADAPTER 22.5 - Mounting plate

1085488

<https://www.phoenixcontact.com/fr/produits/1085488>



The FL PANEL ADAPTER 22.5 is designed to allow products 22.5 mm wide to be mounted flush to a panel, in any orientation.

FL SWITCH 1008N - Industrial Ethernet Switch



1085256

<https://www.phoenixcontact.com/fr/produits/1085256>

DT-LAN-CAT.6+ - Surge protection device

2881007

<https://www.phoenixcontact.com/fr/produits/2881007>



Surge protection in accordance with Class E_A (CAT6_A), for Gigabit Ethernet (up to 10 Gbps), token ring, FDDI/CDDI, ISDN, and DS1. Suitable for Power over Ethernet (PoE++ / 4PPoE) "Mode A" and "Mode B". RJ45 attachment plug with separate grounding cable and ground connection snap-on foot for NS 35 DIN rails.

FL CAT5 PATCH 0,5 - Patch cable

2832263

<https://www.phoenixcontact.com/fr/produits/2832263>



Patch cable, CAT5, assembled, 0.5 m

FL SWITCH 1008N - Industrial Ethernet Switch



1085256

<https://www.phoenixcontact.com/fr/produits/1085256>

FL CAT5 PATCH 1,0 - Patch cable

2832276

<https://www.phoenixcontact.com/fr/produits/2832276>

Patch cable, CAT5, assembled, 1 m



FL CAT5 PATCH 2,0 - Patch cable

2832289

<https://www.phoenixcontact.com/fr/produits/2832289>

Patch cable, CAT5, assembled, 2 m



FL SWITCH 1008N - Industrial Ethernet Switch



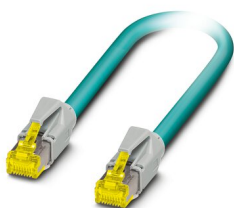
1085256

<https://www.phoenixcontact.com/fr/produits/1085256>

NBC-R4AC-R4AC-IE8A/.../... - Patch cable

1411854

<https://www.phoenixcontact.com/fr/produits/1411854>

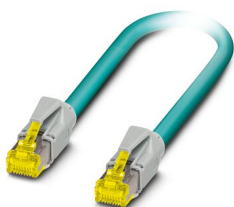


Patch cable, degree of protection: IP20, number of positions: 8, 10 Gbps, CAT6_A, cable outlet: straight, Ethernet

NBC-R4AC/10G-R4AC/10G-94F/2,0 - Patch cable

1408360

<https://www.phoenixcontact.com/fr/produits/1408360>



Patch cable, CAT6_A, 4-pair, shielded, connection not crossed (line), assembled at both ends with RJ45/IP20 connectors, outer sheath material: PUR, length: 2.0 m

FL SWITCH 1008N - Industrial Ethernet Switch



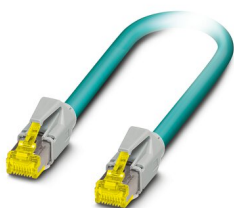
1085256

<https://www.phoenixcontact.com/fr/produits/1085256>

NBC-R4AC/10G-R4AC/10G-94F/3,0 - Patch cable

1408365

<https://www.phoenixcontact.com/fr/produits/1408365>

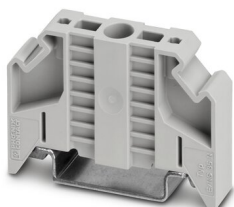


Patch cable, CAT6_A, 4-pair, shielded, connection not crossed (line), assembled at both ends with RJ45/IP20 connectors, outer sheath material: PUR, length: 3.0 m

E/NS 35 N - End clamp

0800886

<https://www.phoenixcontact.com/fr/produits/0800886>



End clamp, width: 9.5 mm, color: gray

FL SWITCH 1008N - Industrial Ethernet Switch



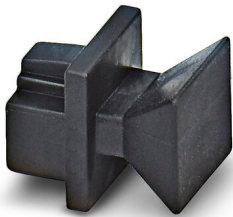
1085256

<https://www.phoenixcontact.com/fr/produits/1085256>

FL RJ45 PROTECT CAP - Dust protection

2832991

<https://www.phoenixcontact.com/fr/produits/2832991>



Dust protection caps for RJ45 socket

Phoenix Contact 2023 © - all rights reserved

<https://www.phoenixcontact.com>

PHOENIX CONTACT SAS

52 Boulevard de Beaubourg Emerainville

77436 Marne La Vallée Cedex 2 France

+33 (0) 1 60 17 98 98

documentation@phoenixcontact.fr